

2020 FİYAT LİSTESİ

ANKATEK YAPI MALZ. LTD ŞTİ

2020

LEO



RUN TO THE FUTURE WITH US

Sayın Bayimiz;

Satışını yapmış olduğumuz ürünlerin fiyatları ve satış şartaları yeniden düzenlenerek bilginize sunulmuştur.

- 1- Fiyat listesi USD bazında olup, sevkiyat tarihindeki merkez bankası efektif satış kuru baz alınacaktır.
- 2- Ödeme şekli ve iskonto oranları EK'te belirtilmiş olup, bu vadelerin dışında satış yapılmayacaktır.
- 3- Siparişleri mail yolu ile bildirilmesi zorunludur. Aksi takdirde siparişler sevk edilmez. İstanbul içi nakliye ücreti firmamıza, İstanbul dışı nakliye ücreti alıcıya aittir.
- 4- Fiyatlarımıza KDV dahil değildir.
- 5- Firmamız ihbar etmeksizin fiyat, ölçü, model isimleri ve teknik özellikleri değiştirme hakkına sahiptir.
- 6- Ürünlerimiz 2 yıl süresince imalat hatasına karşı garanti kapsamındadır.

Saygılarımızla

PERİFERİK POMPALAR



Modeli		Güç		Boyut		Q(m3/h)	H(m)	Fiyat
		(KW)	(HP)	Giriş	Çıkış			
XKm50-1	220V/50Hz	0.11	0.15	1"	1"	0-1,5	3-23	\$59



Modeli		Güç		Boyut		Q(m3/h)	H(m)	Fiyat
180-220V/50Hz	380V/50Hz	(KW)	(HP)	Giriş	Çıkış			
APm30	/	0.3	0.4	1"	1"	0-1,8	2-30	\$72
APm37	/	0.37	0.5	1"	1"	0-2,5	2-40	\$74
APm60	/	0.6	0.8	1"	1"	0-3	5-60	\$113
APm75	/	0.75	1	1"	1"	0-3	5-75	\$125
APm90	/	0.75	1	3/4"	3/4"	0-2	5-90	\$138
APm110	AP110	1.1	1.5	1"	1"	0-4,5	10-85	\$212
APm150	AP150	1.5	2	1"	1"	0-5	10-90	\$237
/	AP220	2.2	3	1"	1"	0-5,5	10-100	\$246



Modeli		Güç		Boyut		Q(m3/h)	H(m)	Fiyat
		(KW)	(HP)	Giriş	Çıkış			
XQm50	220V/50Hz	0.125	0.15	1"	1"	0-1,5	3-23	\$58



Modeli		Güç		Boyut		Q(m3/h)	H(m)	Fiyat
		(KW)	(HP)	Giriş	Çıkış			
AQm37	220V/50Hz	0.37	0.5	1"	1"	0-2,5	2-35	\$74
AQm60	220V/50Hz	0.6	0.8	1"	1"	0-3	5-55	\$113
AQm75	220V/50Hz	0.75	1	1"	1"	0-3	5-75	\$125



Modeli		Güç		Boyut		Q(m3/h)	H(m)	Fiyat
180-220V/50Hz	380V/50Hz	(KW)	(HP)	Giriş	Çıkış			
APSm37	/	0.37	0.5	1"	1"	0-2	5-40	\$87
APSm60	/	0.6	0.8	1"	1"	0-2,5	5-45	\$130
APSm75	/	0.75	1	1"	1"	0-3	5-55	\$137
APSm110	APS110	1.1	1.5	1.5"	1.5"	0-4	5-65	\$216



Modeli		Güç		Boyut		Q(m3/h)	H(m)	Fiyat
		(KW)	(HP)	Giriş	Çıkış			
LKSm126	220V/50Hz	0.125	0.17	1"	1"	0-1,8	4-30	\$93
LKSm350	220V/50Hz	0.35	0.47	1"	1"	0-2,4	4-35	\$107
LKSm550	220V/50Hz	0.55	0.75	1"	1"	0-2,7	4-45	\$143

Hidrofor ve güneş enerjisi suyu basınçlandırma



Modeli		Güç		Boyut		Q(m3/h)	H(m)	Fiyat
		(KW)	(HP)	Giriş	Çıkış			
LKSm130	220V/50Hz	0.125	0.17	1"	1"	0-1,8	4-30	\$114
LKSm350A	220V/50Hz	0.35	0.47	1"	1"	0-2,5	4-35	\$129
LKSm550A	220V/50Hz	0.55	0.75	1"	1"	0-2,8	4-45	\$165
LKSm750A	220V/50Hz	0.75	1	1"	1"	0-3	5-55	\$180



Modeli		Güç		Boyut		Q(m3/h)	H(m)	Fiyat
		(KW)	(HP)	Giriş	Çıkış			
LKSm1100A	220V/50Hz	1.1	1.5	1.5"	1.5"	0-4	4-60	\$313



Modeli		Güç		Boyut		Q(m3/h)	H(m)	Fiyat
		(KW)	(HP)	Giriş	Çıkış			
AKSm155A(AE)	180-220V/50Hz	0.155	0.2	1"	1"	0-2,1	2-32	\$309

JET POMPALAR



Paslanmaz Jet Pompa

Modeli		Güç		Boyut		Q (m ³ /h)	H(m)	Fiyat
		(KW)	(HP)	Giriş	Çıkış			
AJm30S	180-220V/50Hz	0.3	0.4	1"	1"	0-2,5	11-30	\$112
AJm45S	180-220V/50Hz	0.45	0.6	1"	1"	0-2,5	16-38	\$121
AJm60S	180-220V/50Hz	0.6	0.8	1"	1"	0-2,8	18-43	\$151
AJm75S	180-220V/50Hz	0.75	1	1"	1"	0-3,5	20-46	\$163
AJm90S	180-220V/50Hz	0.9	1.2	1"	1"	0-4	22-48	\$172



Döküm Jet Pompa

Modeli		Güç		Boyut		Q (m ³ /h)	H(m)	Fiyat
		(KW)	(HP)	Giriş	Çıkış			
AJm30	180-220V/50Hz	0.3	0.4	1"	1"	0-2,3	14-35	\$110
AJm45	180-220V/50Hz	0.45	0.6	1"	1"	0-2,3	18-41	\$119
AJm60	180-220V/50Hz	0.6	0.8	1"	1"	0-2,8	21-45	\$157
AJm75	180-220V/50Hz	0.75	1	1"	1"	0-4	23-40	\$169
AJm75H	180-220V/50Hz	0.75	1	1"	1"	0-2,8	25-51	\$169
AJm90	180-220V/50Hz	0.9	1.2	1"	1"	0-4	30-48	\$179
AJm90H	180-220V/50Hz	0.9	1.2	1"	1"	0-2,8	33-62	\$179



Döküm Jet Pompa

Modeli		Güç		Boyut		Q (m ³ /h)	H(m)	Fiyat
		(KW)	(HP)	Giriş	Çıkış			
AJm110	180-220V/50Hz	1.1	1.5	1.25"	1"	0-6	23-55	\$282
AJm110H	180-220V/50Hz	1.1	1.5	1.25"	1"	0-4,2	30-60	\$282
AJm110L	180-220V/50Hz	1.1	1.5	1.25"	1"	0-8,5	17-47	\$282
AJm150	180-220V/50Hz	1.5	2	1.25"	1"	0-4,8	33-60	\$305
AJm150H	180-220V/50Hz	1.5	2	1.25"	1"	0-4,2	33-72	\$305
AJm150L	180-220V/50Hz	1.5	2	1.25"	1"	0-8,5	24-54	\$305



Kuyu Tipi Jet Pompa

Modeli		Güç		HS (m)	Boyut		Q (m ³ /h)	H(m)	Fiyat
		(KW)	(HP)		Giriş	Çıkış			
AJDm55/2H	180-220V/50Hz	0.55	0.75	15-40	1.25"	1"	0-1,2	13-37	\$218
AJDm75/2H	180-220V/50Hz	0.75	1		1.25"	1"	0-1,5	17-47	\$230
AJDm110/2H	180-220V/50Hz	1.1	1.5		1.25"	1"	0-1,8	28-70	\$309



Modeli		Güç		HS (m)	Boyut		Q (L/min)	H(m)	Fiyat
		(KW)	(HP)		Giriş	Çıkış			
AJDm55/4H	180-220V/50Hz	0.55	0.75	15-40	1.25"	1"	0-1,5	13-39	\$206
AJDm75/4H	180-220V/50Hz	0.75	1		1.25"	1"	0-1,8	17-50	\$218
AJDm110/4H	180-220V/50Hz	1.1	1.5		1.25"	1"	0-2	29-75	\$296



Santrifüj Pompa

Modeli		Güç		Boyut		Q (m ³ /h)	H(m)	Fiyat
		(KW)	(HP)	Giriş	Çıkış			
180-220V/50Hz	380V/50Hz							
ACm25	-	0.25	0.3	1"	1"	0-4,8	8-17	\$107
ACm37	-	0.37	0.5	1"	1"	0-5,5	12-23	\$117
ACm60	AC60	0.6	0.8	1"	1"	0-5,5	10-27	\$151
ACm75	AC75	0.75	1	1"	1"	0-6	16-36	\$170
ACm110	AC110	1.1	1.5	1.25"	1"	0-7,2	20-40	\$237
ACm150	AC150	1.5	2	1.25"	1"	0-8,5	22-48	\$348
	AC220	2.2	3	1.25"	1"	0-9	28-55	\$339
ACm110L	AC110L	1.1	1.5	1.5"	1"	0-12	16.5-34.5	\$251
ACm150L	AC150L	1.5	2	1.5"	1"	0-12	19-37.5	\$272

TEK KADEMELİ SANTRİFÜJ POMPALAR



Modeli		Güç		Boyut		Q(m3/h)	H(m)	Fiyat
180-220V/50Hz	380V/50Hz	(KW)	(HP)	Giriş	Çıkış			
ACm220CH2	AC220CH2	2.2	3	2"	2"	0-27	18.5-31	\$483
ACm300CH2	AC300CH2	3	4	2"	2"	0-27	25.5-38	\$504
ACm400CH2	AC400CH2	4	5.5	2"	2"	0-27	37-49	\$657
-	AC550CH2	5.5	7.5	2"	2"	0-30	42-54	\$699
ACm300C2	AC300C2	3	4	2"	2"	0-50	11.5-30	\$503
ACm400C2	AC400C2	4	5	2"	2"	0-55	13-39	\$657
-	AC550C2	5.5	7.5	2"	2"	0-55	15-46.5	\$696
-	AC750C2	7.5	10	2"	2"	0-55	20-56.5	7182
-	AC750C4	7.5	10	4"	3"	0-55	24-52.5	\$723



Modeli		Güç		Boyut		Q(m3/h)	H(m)	Fiyat
180-220V/50Hz	380V/50Hz	(KW)	(HP)	Giriş	Çıkış			
ACm60B2	AC60B2	0.6	0.8	2"	2"	0-25	6.5-12.5	\$164
ACm75B2	AC75B2	0.75	1	2"	2"	0-30	5.5-14	\$177
ACm110B2	AC110B2	1.1	1.5	2"	2"	0-30	8.5-19.5	\$246
ACm150B2	AC150B2	1.5	2	2"	2"	0-30	9.5-22	\$258



Modeli		Güç		Boyut		Q(m3/h)	H(m)	Fiyat
180-220V/50Hz	380V/50Hz	(KW)	(HP)	Giriş	Çıkış			
ACm110B3	AC110B3	1.1	1.5	3"	3"	0-55	5.5-12.5	\$299
ACm110B4	AC110B4	1.1	1.5	4"	4"	0-55	5.5-12.5	\$324
ACm150B3	AC150B3	1.5	2	3"	3"	0-60	6-14.5	\$339
ACm150B4	AC150B4	1.5	2	4"	4"	0-60	6-14.5	\$364
ACm220B3	AC220B3	2.2	3	3"	3"	0-66	7.2-17.5	\$417
ACm220B4	AC220B4	2.2	3	4"	4"	0-66	7.2-17.5	\$442
ACm300B3	AC300B3	3	4	3"	3"	0-72	10-26	\$445
ACm300B4	AC300B4	3	4	4"	4"	0-72	10-26	\$470



Modeli		Güç		Boyut		Q(m3/h)	H(m)	Fiyat
180-220V/50Hz	380V/50Hz	(KW)	(HP)	Giriş	Çıkış			
ACm110BF2	AC110BF2	1.1	1.5	2"	2"	0-30	8.5-19.5	\$280
ACm110BF3	AC110BF3	1.1	1.5	3"	3"	0-55	5.5-12.5	\$291
ACm150BF2	AC150BF2	1.5	2	2"	2"	0-30	9.5-22	\$350
ACm150BF3	AC150BF3	1.5	2	3"	3"	0-60	6-14.5	\$389
ACm220BF3	AC220BF3	2.2	3	3"	3"	0-66	7.2-17.5	\$460
ACm400BF4	AC400BF4	4	5.5	4"	4"	0-96	12.1-16.5	\$729



Modeli		Güç		Boyut		Q(m3/h)	H(m)	Fiyat
220-240V/50Hz	380V/50Hz	(KW)	(HP)	Giriş	Çıkış			
XGm/1A	XG/1A	0.75	1	1.5"	1.5"	0-15	1-17.5	\$179
XGm/1B	XG/1B	0.6	0.8	1.5"	1.5"	0-12	3-14	\$152

KADEMELİ SANTRİFÜJ POMPALAR

Modeli		Güç		Boyut		Q(m ³ /h)	H(m)	Fiyat
180-220V/50Hz	380V/50Hz	(KW)	(HP)	Giriş	Çıkış			
2ACm75	2AC75	0.75	1	1.25"	1"	0-5	15-45	\$205
2ACm110	2AC110	1.1	1.5	1.5"	1"	0-8,5	22-47	\$311
2ACm150	2AC150	1.5	2	1.5"	1"	0-10	20-57.5	\$354
2ACm150H	2AC150H	1.5	2	1.5"	1"	0-7,2	29-63.5	\$373
/	2AC220	2.2	3	1.5"	1"	0-11	20.5-65	\$384
2ACm300H	/	3	4	1.5"	1.25"	0-15	21-65	\$592
/	2AC300H	3	4	1.5"	1.25"	0-15	33-70	\$616
/	2AC400H	4	5.5	1.5"	1.25"	0-15	45.5-82	\$684



Kademeli Santrifüj Pompa

Modeli		Güç		Boyut		Q(m ³ /h)	H(m)	Fiyat
180-220V/50Hz	380V/50Hz	(KW)	(HP)	Giriş	Çıkış			
3ACm45	/	0.45	0.6	1"	1"	0-4,2	9-35	\$166
4ACm60	/	0.6	0.8	1"	1"	0-4,2	10-46.5	\$209
3ACm60	/	0.6	0.8	1"	1"	0-5,5	13.5-36	\$193
4ACm75	4AC75	0.75	1	1"	1"	0-5,5	17-46.5	\$205



Kademeli Jet Pompa

Modeli		Güç		Boyut		Q(m ³ /h)	H(m)	Fiyat
220-240V/50Hz	380V/50Hz	(KW)	(HP)	Giriş	Çıkış			
XHSm1500	XHS1500	1.1	1.5	2"	2"	0-16	2.5-15	\$308
XHSm2000	XHS2000	1.5	2	2"	2"	0-20	2.5-20.5	\$351



Klapeli Pis Su Pompası

Modeli		Güç		Boyut		Q(m ³ /h)	H(m)	Fiyat
220-240V/50Hz	380V/50Hz	(KW)	(HP)	Giriş	Çıkış			
3XCm100S	3XC100S	0.6	0.8	1"	1"	0-5	5-35	\$188
4XCm100S	4XC100S	0.75	1	1"	1"	0-5,5	5-45	\$217
5XCm100S	5XC100S	0.9	1.2	1"	1"	0-5,5	10.5-55	\$245



Paslanmaz Kademeli Santrifüj Pompa

Modeli		Güç		Boyut		Q(m ³ /h)	H(m)	Fiyat
220-240V/50Hz	380V/50Hz	(KW)	(HP)	Giriş	Çıkış			
3XCsm100S	3XCsm100S	0.6	0.8	1"	1"	0-5	5-35	\$211
4XCsm100S	4XCsm100S	0.75	1	1"	1"	0-5,5	5-45	\$242
5XCsm100S	5XCsm100S	0.9	1.2	1"	1"	0-5,5	10.5-55	\$278



Paslanmaz Kademeli Santrifüj Pompa

Modeli		Güç		Boyut		Q(m ³ /h)	H(m)	Fiyat
220-240V/50Hz	380V/50Hz	(KW)	(HP)	Giriş	Çıkış			
3XCm120C	/	0.6	0.8	1"	1"	0-5	3.5-34	\$259
4XCm120C	4XC120C	0.75	1	1"	1"	0-5	3-48	\$283
5XCm120C	5XC120C	0.9	1.2	1"	1"	0-5	3-56.5	\$320



Paslanmaz Kademeli Santrifüj Pompa

DOMESTİK POMPALAR



Domestik Jet Pompa

Modeli		Güç		Boyut		Q(m ³ /h)	H(m)	Fiyat
		(W)	(HP)	Giriş	Çıkış			
LKJ-601P	230V/50Hz	600	0.8	1"	1"	0-3	8-35	\$92
LKJ-801P	230V/50Hz	800	1.1	1"	1"	0-3,5	9.5-39	\$96



Domestik Paslanmaz Pompa

Modeli		Güç		Boyut		Q(m ³ /h)	H(m)	Fiyat
		(W)	(HP)	Giriş	Çıkış			
LKJ-601S	230V/50Hz	600	0.8	1"	1"	0-3	8-35	\$112
LKJ-801S	230V/50Hz	800	1.1	1"	1"	0-3,5	9.5-39	\$116
LKJ-901S	230V/50Hz	900	1.2	1"	1"	0-3,5	3-43	\$133
LKJ-1101S	230V/50Hz	1100	1.5	1"	1"	0-4,5	8-46	\$139
LKJ-1301S	230V/50Hz	1300	1.75	1"	1"	0-4,8	8-48	\$142



Domestik Paslanmaz Hidrofor Seti

Modeli		Güç		Boyut		Q(m ³ /h)	H(m)	Fiyat
		(W)	(HP)	Giriş	Çıkış			
LKJ-601PA	230V/50Hz	600	0.8	1"	1"	0-3	8-35	\$166
LKJ-801PA	230V/50Hz	800	1.1	1"	1"	0-3,5	9.5-39	\$170
LKJ-901PA	230V/50Hz	900	1.2	1"	1"	0-3,5	3-43	\$189
LKJ-1101PA	230V/50Hz	1100	1.5	1"	1"	0-4,5	8-46	\$193
LKJ-1301PA	230V/50Hz	1300	1.75	1"	1"	0-4,8	8-48	\$198



Domestik Paslanmaz Hidrofor Seti

Modeli		Güç		Boyut		Q(m ³ /h)	H(m)	Fiyat
		(W)	(HP)	Giriş	Çıkış			
LKJ-601SA	230V/50Hz	600	0.8	1"	1"	0-3	8-35	\$186
LKJ-801SA	230V/50Hz	800	1.1	1"	1"	0-3,5	9.5-39	\$190
LKJ-901SA	230V/50Hz	900	1.2	1"	1"	0-3,5	3-43	\$205
LKJ-1101SA	230V/50Hz	1100	1.5	1"	1"	0-4,5	8-46	\$210
LKJ-1301SA	230V/50Hz	1300	1.75	1"	1"	0-4,8	8-48	\$213

DOMESTİK POMPALAR



Çift Çıkışlı Flatörlü Plastik Drenaj Pompası

Modeli		Güç		Boyut		Q(m ³ /h)	H(m)	Fiyat
		(W)	(HP)	Çıkış				
LKS-250P	230V/50Hz	250	0.3	32mm		0-6	1.7-5.8	\$80
LKS-400P	230V/50Hz	400	0.5	32mm		0-7,5	1.8-6.5	\$84
LKS-500P	230V/50Hz	500	0.7	32mm		0-10	1.5-7.6	\$92
LKS-750P	230V/50Hz	750	1	32mm		0-12	2.2-8.7	\$97
LKS-1000P	230V/50Hz	1000	1.3	32mm		0-12	2-11.6	\$119

* 10 mt Kablolu ve Flatörlü



Çift Çıkışlı Flatörlü Plastik Drenaj Pompası

Modeli		Güç		Boyut		Q(m ³ /h)	H(m)	Fiyat
		(W)	(HP)	Çıkış				
LKS-250PW	230V/50Hz	250	0.3	32mm		0-6	1.4-4.1	\$82
LKS-400PW	230V/50Hz	400	0.5	32mm		0-7,5	1.3-4.7	\$84
LKS-500PW	230V/50Hz	500	0.7	32mm		0-10	1.4-6.8	\$94
LKS-750PW	230V/50Hz	750	1	32mm		0-12	2-7.9	\$98
LKS-1000PW	230V/50Hz	1000	1.3	32mm		0-12	1.0-10.6	\$119

* 10 mt Kablolu ve Flatörlü - Pis Su



Çift Çıkışlı Sensörlü Plastik Drenaj Pompası

Modeli		Güç		Boyut		Q(m ³ /h)	H(m)	Fiyat
		(W)	(HP)	Çıkış				
LKS-404P	230V/50Hz	400	0.5	32mm		0-8	1.8-6.5	\$109
LKS-504P	230V/50Hz	500	0.7	32mm		0-11	1.5-7.6	\$117
LKS-754P	230V/50Hz	750	1	32mm		0-12	2.2-8.7	\$127
LKS-1004P	230V/50Hz	1000	1.3	32mm		0-13	2-11.6	\$143

DRENAJ POMPALARI



Temiz Su
Drenaj Pompası

Modeli		Güç		Boyut	Q(m3/h)	H(m)	Fiyat
		(W)	(HP)				
XKS-250P	230V/50Hz	250	0.3	32mm	0-6,5	2.4-5.8	\$78
XKS-400P	230V/50Hz	400	0.5	32mm	0-9	1.5-6.5	\$83
XKS-500P	230V/50Hz	500	0.7	32mm	0-10	2.3-7.6	\$88
XKS-750P	230V/50Hz	750	1	40mm	0-12	3.2-8.7	\$94

* 10 mt Kablolü ve Flatörlü



Temiz Su Paslanmaz
Gövdeli Drenaj
Pompası

Modeli		Güç		Boyut	Q(m3/h)	H(m)	Fiyat
		(W)	(HP)				
XKS-250S	230V/50Hz	250	0.3	32mm	0-6,5	2.3-5.5	\$99
XKS-400S	230V/50Hz	400	0.5	32mm	0-10	2-6.3	\$103
XKS-500S	230V/50Hz	500	0.7	32mm	0-10	2.5-7.5	\$112
XKS-750S	230V/50Hz	750	1	32mm	0-11	2.3-8.5	\$116
XKS-1000S	230V/50Hz	1000	1.5	32mm	0-12	1.9-11.5	\$154

* 10 mt Kablolü ve Flatörlü



Az Kirlı Sular İçin
Drenaj Pompası

Modeli		Güç		Boyut	Q(m3/h)	H(m)	Fiyat
		(W)	(HP)				
XKS-400PW	230V/50Hz	400	0.5	32mm	0-9	1.3-4.8	\$83
XKS-550PW	230V/50Hz	550	0.75	32mm	0-11	1.5-7	\$91
XKS-750PW	230V/50Hz	750	1	40mm	0-13	1.5-8.2	\$95
XKS-1000PW	230V/50Hz	1000	1.5	40mm	0-14	3-10.5	\$119

* 10 mt Kablolü ve Flatörlü - Pis Su



Az Kirlı Sular İçin
Paslanmaz Gövdeli
Drenaj Pompası

Modeli		Güç		Boyut	Q(m3/h)	H(m)	Fiyat
		(W)	(HP)				
XKS-400SW	230V/50Hz	400	0.5	40mm	0-8	1.5-4.7	\$114
XKS-550SW	230V/50Hz	550	0.75	40mm	0-10	2.5-7	\$122
XKS-750SW	230V/50Hz	750	1	40mm	0-12	2.5-8.3	\$133
XKS-1000SW	230V/50Hz	1000	1.5	40mm	0-14	2.8-10.3	\$162

* 10 mt Kablolü ve Flatörlü - Pis Su



Keson Kuyı
Pompası

Modeli	Volt / Frekans	Güç	Boyut	Q(m3/h)	H(m)	Fiyat
		(W)				
XKS-900S	230V/50Hz	900	25mm	0-6	0-34	\$237
XKS-1100S	230V/50Hz	1100	25mm	0-6	0-45	\$272

* 10 mt Kablolü ve Flatörlü - çok kademeli pompa



Sintine Pompası

Modeli	AMPS(A)	Volt	Max.Basma Yüksekliği	Max.Debi	Kablo (mm)	Fiyat
XBP-1100	2.5A/1.5A	12V	4	1100GPH	750	\$34
XBP-2000	8A/6A	12V	4	2000GPH	750	\$50
XBP-3500	10A/8A	12V	8	3500GPH	750	\$87

HAVUZ POMPALARI



Havuz Pompası

Modeli	Güç	Boyut		Q(m3/h)	H(m)	Fiyat
	(W)	Giriş	Çıkış			
XKP250-2	250	40mm	40mm	0-7	1.0-6.9	\$144
XKP300-2	300	40mm	40mm	0-7	1.0-7.7	\$148
XKP350-2	350	40mm	40mm	0-8	0.8-8.4	\$155
XKP450-2	450	40mm	40mm	0-9,5	2.4-9.6	\$161



Havuz Pompası

XKP554	600	63mm	63mm	0-16	0.5-9.7	\$227
XKP804	800	63mm	63mm	0-18	1.5-10.8	\$241
XKP904	900	63mm	63mm	0-19	0.2-13.2	\$247
XKP1104	1100	63mm	63mm	0-19	4.8-14.8	\$257
XKP1604	1600	63mm	63mm	0-27	3.5-16.8	\$316
XKP2204	2200	63mm	63mm	0-30	3.3-17.8	\$367



Fiskiyeli Havuz Pompası

Modeli	Volt / Frekans	Güç	Max.head	Max.Debi	Fiyat
		(w)	m	L / h	
XKF-6P	220-240V/50HZ	6	0.7	380	\$39
XKF-15P	220-240V/50HZ	15	1	850	\$48
XKF-20P	220-240V/50HZ	20	1.1	1100	\$48



XKF-35P	220-240V/50HZ	35	1.4	1600	\$61
XKF-55P	220-240V/50HZ	55	2.3	2300	\$61
XKF-75P	220-240V/50HZ	75	2.7	2650	\$88
XKF-95P	220-240V/50HZ	95	3	3500	\$101
XKF-110P	220-240V/50HZ	110	3.7	3750	\$113



Esnek Milli Pompa

Modeli	Güç		Max. Debi(m3/h)	Max.H(m)	Max.Suction (m)	Fiyat
	(KW)	(HP)				
220V/50HZ						
FSP750-25	0.75	1	2	90	25	\$276
FSP750-40	0.75	1	2	90	40	\$334



Elektrik Kontrol Panoları

Modeli	Voltage	Fiyat
1 HP	220V/50HZ	\$27
1.5 HP	220V/50HZ	\$29
2 HP	220V/50HZ	\$31



Modeli	Voltage	Güç	Fiyat
SM-A1-2200	220V/50HZ	1-2.2KW	\$89
MB-B1-4000	380V/50HZ	1-4KW	\$131
MB-B1-7500	380V/50HZ	1-7.5KW	\$143
MB-B1-15000	380V/50HZ	2.2-15KW	\$184

HİDROMAT



PS-04A

VOLT	220-240V
FREKANS	50HZ
MAX.Güç	1.1KW/1.5KW
BAŞLATMA AYAR BASINCI	1.2bar/1.5bar/2.2bar
MAX.ÇALIŞMA BASINCI	10bar
BAĞLANTI ÖLÇÜSÜ	1"
KORUMA SINIFI	IP65
MAX.ÇALIŞMA SICAKLIĞI	60°C
KABLO UZUNLUĞU	1.5m
FİYAT(USD)	\$57



PS-04B

VOLT	220-240V
FREKANS	50HZ
MAX.Güç	1.1KW/1.5KW
BAŞLATMA AYAR BASINCI	1.2bar/1.5bar/2.2bar
MAX.ÇALIŞMA BASINCI	10bar
BAĞLANTI ÖLÇÜSÜ	1"
KORUMA SINIFI	IP65
MAX.ÇALIŞMA SICAKLIĞI	60°C
KABLO UZUNLUĞU	1.5m
FİYAT(USD)	\$58



PS-04C

VOLT	220-240V
FREKANS	50HZ
MAX.Güç	1.1KW/1.5KW
BAŞLATMA AYAR BASINCI	1.2bar/1.5bar/2.2bar
MAX.ÇALIŞMA BASINCI	10bar
BAĞLANTI ÖLÇÜSÜ	1"
KORUMA SINIFI	IP65
MAX.ÇALIŞMA SICAKLIĞI	60°C
KABLO UZUNLUĞU	1.5m
FİYAT(USD)	\$58



Benzinli Su Motoru



Modeli	Güç	Boyut		Q(m³/h)	H(m)	Fiyat
	HP	Giriş	Çıkış			
LGP10	1.6	1"	1"	0-4	26-35	\$238
LGP15	1.6	1.5"	1.5"	0-14	6.5-35	\$248
LGP20-A	5.5	2"	2"	0-30	1.5-30	\$343
LGP30-A	6.5	3"	3"	0-60	3.5-30	\$363
LGP20-H	6.5	2"	2"	0-30	2.5-55	\$407
LGP20-2H	6.5	2"	2"	0-20	5-80	\$427

Kendinden Hazneli WC Öğütücü



Modeli	Güç	Boyut		Q(m³/h)	H(m)	Fiyat
	(W)	Giriş	Çıkış			
WC600A	600	/	/	0-7,5	3.5-9.2	\$432

Daha yüksek kapasiteli ürünlerimiz için iletişime geçiniz.

KOMPLE PASLANMAZ SANTRİFÜJ POMPALAR

Paslanmaz Monoblok Santrifüj Pompa



Model Kodlama

XZS 65 - 50 - 160 / 40

① ② ③ ④ ⑤

- ① LEO Paslanmaz Çelik Standardı Santrifüj Pompa
- ② Giriş çapı(mm)
- ③ Çıkış çapı(mm)
- ④ Çark Nominal çapı(mm)
- ⑤ Anma Gücü(x 100w)

Modeli	Volt / Frekans	Güç		Max.head m	Max.Debi m³/h	Fiyat
		(Kw)	Hp			
XZS50-32-125/11	380V/50HZ	1.1	1.5	24	20	\$847
XZS50-32-160/15	380V/50HZ	1.5	2	29.5	20	\$965
XZS50-32-160/22	380V/50HZ	2.2	3	37	20	\$985
XZS50-32-200/30	380V/50HZ	3	4	45	20	\$1,238
XZS50-32-200/40	380V/50HZ	4	5.5	55	22	\$1,253
XZS65-50-125/15	380V/50HZ	1.5	2	20	36	\$932
XZS65-50-125/22	380V/50HZ	2.2	3	26	36	\$952
XZS65-50-160/30	380V/50HZ	3	4	31	42	\$1,137
XZS65-50-160/40	380V/50HZ	4	5.5	39	42	\$1,153
XZS65-40-200/55	380V/50HZ	5.5	7.5	47	42	\$1,505
XZS65-40-200/75	380V/50HZ	7.5	10	57	42	\$1,562
XZS80-65-125/30	380V/50HZ	3	4	22.5	72	\$1,187
XZS80-65-125/40	380V/50HZ	4	5.5	25.5	72	\$1,203
XZS80-65-160/55	380V/50HZ	5.5	7.5	33	72	\$1,438
XZS80-65-160/75	380V/50HZ	7.5	10	39	72	\$1,496
XZS80-50-200-92	380V/50HZ	9.2	12.5	53	72	\$2,918
XZS80-50-200-110	380V/50HZ	11	15	57.5	72	\$2,924
XZS100-80-125/40	380V/50HZ	4	5.5	20	90	\$1,380
XZS100-80-125/55	380V/50HZ	5.5	7.5	23	108	\$1,574
XZS100-80-125/75	380V/50HZ	7.5	10	29	114	\$1,631
XZS100-80-160/92	380V/50HZ	9.2	12.5	33	90	\$3,118
XZS100-80-160/110	380V/50HZ	11	15	38.5	90	\$3,127
XZS100-65-200/150	380V/50HZ	15	20	47	132	\$3,388
XZS100-65-200/185	380V/50HZ	18.5	25	53	132	\$3,556
XZS100-65-200/220	380V/50HZ	22	30	58	132	\$4,073

Paslanmaz Açık Fanlı Santrifüj Pompa



Model Kodlama

A MS - m - 70 / 0.37

① ② ③ ④ ⑤

- ① LEO ürün tipi
- ② Komple Paslanmaz Çelik Santrifüj Pompa
- ③ Tek fazlı motor (Üç fazlı motor için atlanmıştır)
- ④ Debi (lt / dk)
- ⑤ Güç Değeri (kW)

Modeli		Güç		Boyut		Q(m3/h)	H(m)	Fiyat	
220-V/50Hz	380V/50Hz	KW	HP	Giriş	Çıkış			Monofaze	Trifaze
AMSm70/0.37	AMS70/0.37	0.37	0.5	1.25"	1"	0-5	12.1-20.9	\$212	\$222
AMSm70/0.55	AMS70/0.55	0.55	0.75	1.25"	1"	0-5	19.1-29.5	\$226	\$237
AMSm70/0.75	AMS70/0.75	0.75	1	1.25"	1"	0-5	23-30.4	\$273	\$273
AMSm120/0.55	AMS120/0.55	0.55	0.75	1.25"	1"	0-10	8.7-20.2	\$225	\$236
AMSm120/1.1	AMS120/1.1	1.1	1.5	1.25"	1"	0-10	16.4-30.2	\$287	\$282
AMSm210/0.75	AMS210/0.75	0.75	1	1.5"	1.25"	0-18	9.8-16.8	\$277	\$277
AMSm210/1.1	AMS210/1.1	1.1	1.5	1.5"	1.25"	0-18	13.6-19.7	\$292	\$285
AMSm210/1.5	AMS210/1.5	1.5	2	1.5"	1.25"	0-18	18-24.2	\$357	\$351
AMSm210/2.2	AMS210/2.2	2.2	3	1.5"	1.25"	0-18	21.9-27.5	\$398	\$388
AMSm370/1.1	AMS370/1.1	1.1	1.5	2"	1.25"	0-26	7.6-15.4	\$289	\$283
AMSm370/1.5	AMS370/1.5	1.5	2	2"	1.25"	0-29	10.2-19.3	\$356	\$347
AMSm370/2.2	AMS370/2.2	2.2	3	2"	1.25"	0-31	12.3-23.1	\$395	\$385

KOMPLE PASLANMAZ SANTRİFÜJ POMPALAR

Açık Fanlı Paslanmaz Santrifüj Pompa



Model Kodlama

ABK 200 - D

① ② ③

- ① Yarı Açık Çark Paslanmaz Çelik Santrifüj Pompa
- ② Güç x 100 (W)
- ③ Tek fazlı motor (Üç fazlı motor için atlanmıştır)

Modeli	Volt / Frekans	Güç		Max.head m	Max.Debi m³/h	Fiyat
		(Kw)	Hp			
ABK50	380V/50HZ	0.37	0.5	11.6	6	\$284
ABK50D	220V/50HZ	0.37	0.5	11.6	6	\$265
ABK100	380V/50HZ	0.75	1	8	18	\$336
ABK100D	220V/50HZ	0.75	1	8	18	\$339
ABK120	380V/50HZ	0.9	1.2	11	18	\$339
ABK120D	220V/50HZ	0.9	1.2	11	18	\$513
ABK150	380V/50HZ	1.1	1.5	9.5	33	\$474
ABK150D	220V/50HZ	1.1	1.5	9.5	33	\$459
ABK200	380V/50HZ	1.5	2	12.7	42	\$484
ABK200D	220V/50HZ	1.5	2	12.7	42	\$475
ABK300	380V/50HZ	2.2	3	15	57	\$582
ABK300D	220V/50HZ	2.2	3	15	57	\$626
ABK400	380V/50HZ	3	4	17.5	66	\$601

Paslanmaz Kademeli Santrifüj Pompa



Model Kodlama

ECH (m) - 2 - 30 (S)

① ② ③ ④ ⑤

- ① Paslanmaz Çelik İslanan parçalar
- ② Tek fazlı motor (Üç fazlı motor için atlanmıştır)
- ③ Debi (m³/h)
- ④ Kademe x10
- ⑤ Paslanmaz Çelik Kademeli Santrifüj Pompa

Modeli		Güç		Boyut		Q(m³/h)	H(m)	Fiyat	
220-240V/50Hz	380V/50Hz	KW	HP	Giriş	Çıkış			Monofase	Trifase
ECH(m)2-20(S)	ECH2-20(S)	0.37	0.5	1"	1"	0.6-3.6	8-16	\$466	\$477
ECH(m)2-30(S)	ECH2-30(S)	0.37	0.5	1"	1"	0.6-3.6	12-24	\$482	\$494
ECH(m)2-40(S)	ECH2-40(S)	0.55	0.75	1"	1"	0.6-3.6	16-33	\$552	\$536
ECH(m)2-50(S)	ECH2-50(S)	0.55	0.75	1"	1"	0.6-3.6	19-40	\$571	\$558
ECH(m)2-60(S)	ECH2-60(S)	0.75	1	1"	1"	0.6-3.6	23-50	\$601	\$593
ECH(m)4-20(S)	ECH4-20(S)	0.55	0.75	1.25"	1"	1-7	8-17	\$484	\$471
ECH(m)4-30(S)	ECH4-30(S)	0.55	0.75	1.25"	1"	1-7	13-27	\$504	\$491
ECH(m)4-40(S)	ECH4-40(S)	0.75	1	1.25"	1"	1-7	17-36	\$574	\$566
ECH(m)4-50(S)	ECH4-50(S)	1.1	1.5	1.25"	1"	1-7	21-46	\$608	\$603
ECH(m)4-60(S)	ECH4-60(S)	1.1	1.5	1.25"	1"	1-7	26-55	\$628	\$622



Paslanmaz Kademeli Santrifüj Pompa

Modeli		Güç		Boyut		Q(m³/h)	H(m)	Fiyat	
220-240V/50Hz	380V/50Hz	KW	HP	Giriş	Çıkış			Monofase	Trifase
ECH(m)2-20	ECH2-20	0.37	0.5	1"	1"	0.6-3.6	8-16	\$275	\$262
ECH(m)2-30	ECH2-30	0.37	0.5	1"	1"	0.6-3.6	12-24	\$292	\$280
ECH(m)2-40	ECH2-40	0.55	0.75	1"	1"	0.6-3.6	16-33	\$359	\$357
ECH(m)2-50	ECH2-50	0.55	0.75	1"	1"	0.6-3.6	19-40	\$380	\$378
ECH(m)2-60	ECH2-60	0.75	1	1"	1"	0.6-3.6	23-50	\$408	\$403
ECH(m)4-20	ECH4-20	0.55	0.75	1.25"	1"	1-7	8-17	\$295	\$292
ECH(m)4-30	ECH4-30	0.55	0.75	1.25"	1"	1-7	13-27	\$316	\$314
ECH(m)4-40	ECH4-40	0.75	1	1.25"	1"	1-7	17-36	\$389	\$376
ECH(m)4-50	ECH4-50	1.1	1.5	1.25"	1"	1-7	21-46	\$417	\$415
ECH(m)4-60	ECH4-60	1.1	1.5	1.25"	1"	1-7	26-55	\$440	\$436

Daha yüksek kapasiteli ürünlerimiz için iletişime geçiniz.

PASLANMAZ KADEMELİ SANTRİFÜJ POMPALAR



ECH

Model Kodlama

ECH (m) - 10 - 30

① ② ③ ④

- ① Paslanmaz Çelik Kademeli Santrifüj Pompa
- ② Tek fazlı motor (Üç fazlı motor için atlanmıştır)
- ③ Debi (m³/h)
- ④ Kademe x10

Modeli		Güç		Boyut		Q(m ³ /h)	H(m)	Fiyat
220-240V/50Hz	380V/50Hz	KW	HP	Giriş	Çıkış			
ECH(m)10-10	ECH10-10	0.75	1	1.5"	1.25"	6-11	5.8-9.1	\$420
ECH(m)10-20	ECH10-20	0.75	1	1.5"	1.25"	6-12	10.6-17.9	\$424
ECH(m)10-30	ECH10-30	1.1	1.5	1.5"	1.25"	6-12	16.9-27.1	\$520
ECH(m)10-40	ECH10-40	1.5	2	1.5"	1.25"	6-12	24.6-38.6	\$634
ECH(m)10-50	ECH10-50	2.2	3	1.5"	1.25"	6-12	31.1-47.8	\$711
ECH(m)15-10	ECH15-10	1.1	1.5	2"	2"	9-21	8.2-12.4	\$458
ECH(m)15-20	ECH15-20	2.2	3	2"	2"	9-21	18.8-25.6	\$593
/	ECH15-30	3	4	2"	2"	9-21	28.5-38.7	\$738
/	ECH15-40	4	5.5	2"	2"	9-21	38.3-51.8	\$851
ECH(m)20-10	ECH20-10	1.1	1.5	2"	2"	9-21	5.7-12.1	\$459
ECH(m)20-20	ECH20-20	2.2	3	2"	2"	9-21	17.2-26.1	\$594
/	ECH20-30	4	5.5	2"	2"	9-21	26.9-39.9	\$806
/	ECH20-40	4	5.5	2"	2"	9-21	34-52.7	\$852



Model Kodlama

ECH (m) - 2 - 30

① ② ③ ④

- ① Paslanmaz Çelik Kademeli Santrifüj Pompa
- ② Tek fazlı motor (Üç fazlı motor için atlanmıştır)
- ③ Debi (m³/h)
- ④ Kademe x10

Modeli		Güç		Boyut		Q(m ³ /h)	H(m)	Fiyat	
220-240V/50Hz	380V/50Hz	KW	HP	Giriş	Çıkış			Monofaze	Trifaze
EDHm2-20	EDH2-20	0.37	0.5	1"	1"	0.5-4	6.5-16.7	\$316	\$304
EDHm2-30	EDH2-30	0.37	0.5	1"	1"	0.5-4	7.2-25.8	\$329	\$320
EDHm2-40	EDH2-40	0.55	0.75	1"	1"	0.5-4	12.6-34.8	\$395	\$393
EDHm2-50	EDH2-50	0.55	0.75	1"	1"	0.5-4	13.5-43.5	\$412	\$409
EDHm2-60	EDH2-60	0.75	1	1"	1"	0.5-4	14.3-50.8	\$438	\$433
EDHm4-20	EDH4-20	0.55	0.75	1.25"	1.25"	1-7	2.3-17.8	\$335	\$334
EDHm4-30	EDH4-30	0.55	0.75	1.25"	1.25"	1-7	7.3-26.7	\$348	\$348
EDHm4-40	EDH4-40	0.7	1	1.25"	1.25"	1-7	9.2-36.1	\$409	\$404
EDHm4-50	EDH4-50	1.1	1.5	1.25"	1.25"	1-7	10-45.7	\$440	\$438
EDHm4-60	EDH4-60	1.1	1.5	1.25"	1.25"	1-7	12-53.6	\$455	\$452



Modeli		Güç		Boyut		Q(m ³ /h)	H(m)	Fiyat
380V/50Hz		KW	HP	Giriş	Çıkış			
EDH10-10		0.75	1	2"	2"	6-14	3.1-9.1	\$540
EDH10-20		0.75	1	2"	2"	6-14	6.2-17.9	\$562
EDH10-30		1.1	1.5	2"	2"	6-14	10-27.5	\$655
EDH10-40		1.5	2	2"	2"	6-14	15.9-38.7	\$751
EDH10-50		2.2	3	2"	2"	6-14	18-47.2	\$818
EDH15-10		1.1	1.5	2"	2"	6-14	4.8-11.6	\$559
EDH15-20		2.2	3	2"	2"	6-14	12-25.4	\$713
EDH15-30		3	4	2"	2"	6-14	18.8-38.4	\$841
EDH20-10		1.1	1.5	2"	2"	9-31	5.2-12.6	\$560
EDH20-20		2.2	3	2"	2"	9-31	13.2-26.5	\$714
EDH20-30		4	5.5	2"	2"	9-31	22-41.2	\$912

3 HIZLI SİRKÜLASYON POMPALARI



Aktarılan sıvı sıcaklığı
2°C- 60 °C

Model Kodlama

LRP 15 - 90 - A / 160

① ② ③ ④ ⑤

- ① LEO Booster pompası
- ② Giriş / Çıkış çapı (mm)
- ③ Maks. Basma yüksekliği (dm)
- ④ Otomatik çalıştırma
- ⑤ Giriş ve çıkış aralığı (mm)

Modeli	Volt / Frekans	Güç	Giriş/Çıkış	boru boyutu	Max.Head	Max.Debi	Fiyat
		(W)	mm		m	m3/h	
LRP15-90A/160	220V/50HZ	123	15	1"	9	25	\$107

LRP15-40/130	220V/50HZ	74	15	1"	4	2,5	\$84
LRP15-50/130	220V/50HZ	85	15	1"	4.5	2,5	\$83
LRP15-60/130	220V/50HZ	96	15	1"	5.5	2,5	\$83
LRP20-40/130	220V/50HZ	74	20	1.25"	4	2,7	\$85
LRP20-50/130	220V/50HZ	85	20	1.25"	4.5	3	\$84
LRP20-60/130	220V/50HZ	96	20	1.25"	5.5	3	\$84
LRP25-120/180	220V/50HZ	270	18	1.5"	11.5	4	\$135
LRP25-40/130	220V/50HZ	74	25	1.5"	4	3,5	\$85
LRP25-40/180	220V/50HZ	74	25	1.5"	4	3,5	\$85
LRP25-50/130	220V/50HZ	85	25	1.5"	4.5	3	\$84
LRP25-50/180	220V/50HZ	85	25	1.5"	4.5	3,5	\$85
LRP25-60/130	220V/50HZ	96	25	1.5"	5.5	3	\$84
LRP25-60/180	220V/50HZ	96	25	1.5"	5.5	4	\$84
LRP25-70/130	220V/50HZ	150	25	1.5"	6.3	4	\$92
LRP25-70/180	220V/50HZ	150	25	1.5"	6.3	4	\$93
LRP25-80/180	220V/50HZ	200	28	1.5"	7.1	7	\$131
LRP32-40/180	220V/50HZ	74	32	2"	4	3,5	\$86
LRP32-50/180	220V/50HZ	85	32	2"	4.5	3,5	\$86
LRP32-60/180	220V/50HZ	96	32	2"	5.5	4	\$85
LRP32-70/180	220V/50HZ	150	32	1.5"	6.3	4	\$97
LRP32-80/180	220V/50HZ	270	42	2"	7.3	12	\$138



Aktarılan sıvı sıcaklığı
2°C- 110 °C

Model Kodlama

LRP 15 - 50 - B / 130

① ② ③ ④ ⑤

- ① LEO sirkülasyon pompası
- ② Giriş / Çıkış çapı (mm)
- ③ Maks. baş (dm)
- ④ Kimlik yok = dökme demir pompa gövdesi ve dişli bağlantısı
F=Dökme demir pompa gövdesi ve flanş bağlantısı
B=Tunç pompa gövdesi ve dişli bağlantısı
- ⑤ Giriş ve çıkış aralığı (mm)

LRP15-40B/130	220V/50HZ	74	15	1"	4	2,5	\$131
LRP15-50B/130	220V/50HZ	85	15	1"	4.5	2,5	\$131
LRP15-60B/130	220V/50HZ	96	15	1"	5.5	2,5	\$129

LRP21-40F/120	220V/50HZ	74	21	1.25"	4	3,5	\$85
LRP21-50F/120	220V/50HZ	85	21	1.25"	4.5	3,5	\$85
LRP21-60F/120	220V/50HZ	96	21	1.25"	5.5	3,7	\$85
LRP21-70F/120	220V/50HZ	150	21	1.25"	6.3	4	\$88
LRP32-80F/220	220V/50HZ	270	42	2"	7.3	12	\$153
LRP36-80F/200	220V/50HZ	270	42	2"	7.3	12	\$142
LRP40-80F/250	220V/50HZ	270	42	2"	7.3	12	\$159

FREKANS KONVERTÖRLÜ SİRKÜLASYON POMPASI

MODEL	BAĞLANTI ÇAPI	FLANŞ ARASI MESAFE	MOTOR GÜCÜ	VOLTAJ	FİYAT (USD)
ASTRA EKO 20/40-130R	1"	130	4-22 W	230 v	192
ASTRA EKO 20/60-130R	1"	130	4-45 W	230 v	201
ASTRA EKO 25/60-180R	1 1/4"	180	4-45 W	230 v	207
ASTRA EKO 32/60+180R	1 1/4"	180	15-140 W	230 v	418
ASTRA EKO 32/80-180R	1 1/4"	180	15-180 W	230 v	438
ASTRA EKO 40/60-220F	DN40	220	15-140 W	230 v	483
ASTRA EKO 40/80-220F	DN40	220	15-180 W	230 v	496
ASTRA EKO 40/100-220F	DN40	220	15-310 W	230 v	549
ASTRA EKO 40/60-250F	DN40	250	15-140 W	230 v	504
ASTRA EKO 40/80-250F	DN40	250	15-180 W	230 v	527
ASTRA EKO 40/100-250F	DN40	250	15-310 W	230 v	556
ASTRA EKO 50/60-280F	DN50	280	25-320 W	230 v	630
ASTRA EKO 50/80-280F	DN50	280	25-440 W	230 v	664
ASTRA GOLD 40/120-250F	DN40	250	25-470 W	230 v	680
ASTRA GOLD 40/180-250F	DN40	250	25-720 W	230 v	789
ASTRA GOLD 50/80-240F	DN50	240	25-410 W	230 v	715
ASTRA GOLD 50/120-240F	DN50	240	25-520 W	230 v	727
ASTRA GOLD 50/80-280F	DN50	280	30-410 W	230 v	715
ASTRA GOLD 50/120-280F	DN50	280	30-520 W	230 v	727
ASTRA GOLD 50/180-280F	DN50	280	30-770 W	230 v	807
ASTRA GOLD 65/90-280F	DN65	280	30-610 W	230 v	784
ASTRA GOLD 65/70-340F	DN65	340	30-480 W	230 v	793
ASTRA GOLD 65/120-340F	DN65	340	30-760 W	230 v	850
ASTRA GOLD 65/140-340F	DN65	340	30-930 W	230 v	1.072
ASTRA GOLD 80/80-360F	DN80	360	70-860 W	230 v	950
ASTRA GOLD 80/120-360F	DN80	360	70-1350 W	230 v	1.069
ASTRA GOLD 100/80-360F	DN100	360	70-920 W	230 v	1.292
ASTRA GOLD 100/120-360F	DN100	360	70-1600 W	230 v	1.376



KURU ROTORLU SİRKÜLASYON POMPALARI



Model Kodlama

LPP 80 - 36 - 15/ 2

- ① LEO Dikey Sıralı Pompa
- ② Giriş / Çıkış çapı (mm)
- ③ Basma Yüksekliği (m)
- ④ Gücü (kW)
- ⑤ Motor Pole

Modeli	Volt / Frekans	Güç		Max.head m	Max.Debi m³/h	Fiyat
		(Kw)	Hp			
LPP32-8-0.37/2	380V/50Hz	0.37	0.5	10	11	\$521
LPP32-4-0.37/2	380V/50Hz	0.37	0.5	6	8.5	\$518
LPP32-31-3/2	380V/50Hz	3	4	37	24	\$1,235
LPP32-26-2.2/2	380V/50Hz	2.2	3	32	21	\$1,049
LPP32-21-1.5/2	380V/50Hz	1.5	2	26	18.5	\$990
LPP32-16-1.1/2	380V/50Hz	1.1	1.5	20	16	\$912
LPP40-20.5-1.5/2	380V/50Hz	1.5	2	25	20	\$982
LPP40-17.5-1.1/2	380V/50Hz	1.1	1.5	21	18	\$908
LPP40-13-0.75/2	380V/50Hz	0.75	1	16.5	15.5	\$858
LPP40-31-4/2	380V/50Hz	4	5.5	35	38	\$1,351
LPP40-24.5-3/2	380V/50Hz	3	4	28	36	\$1,252
LPP40-20.5-2.2/2	380V/50Hz	2.2	3	25	35	\$1,060
LPP50-24-3/2	380V/50Hz	3	4	29	36	\$1,248
LPP50-21-2.2/2	380V/50Hz	2.2	3	25	35	\$1,055
LPP50-16-1.5/2	380V/50Hz	1.5	2	19	32	\$996
LPP50-12-1.1/2	380V/50Hz	1.1	1.5	15	26	\$922
LPP50-34-5.5/2	380V/50Hz	5.5	7.5	42	50	\$1,789
LPP50-28-4/2	380V/50Hz	4	5.5	33	43	\$1,369
LPP65-35-7.5/2	380V/50Hz	7.5	10	39	70	\$1,973
LPP65-28-5.5/2	380V/50Hz	5.5	7.5	30	70	\$1,864
LPP65-21-4/2	380V/50Hz	4	5.5	24	60	\$1,448
LPP65-17-3/2	380V/50Hz	3	4	20	56	\$1,349
LPP65-14-2.2/2	380V/50Hz	2.2	3	17	50	\$1,151
LPP65-56-18.5/2	380V/50Hz	18.5	24	61	86	\$3,275
LPP65-49-15/2	380V/50Hz	15	20	53	80	\$3,087
LPP65-40-11/2	380V/50Hz	11	15	43	80	\$2,868
LPP80-20-5.5/2	380V/50Hz	5.5	7.5	25	90	\$1,877
LPP80-17-4/2	380V/50Hz	4	5.5	21	79	\$1,461
LPP80-14-3/2	380V/50Hz	3	4	17	75	\$1,362
LPP80-10.5-2.2/2	380V/50Hz	2.2	3	14	70	\$1,164
LPP80-8.5-1.5/2	380V/50Hz	1.5	2	10.5	65	\$1,105
LPP80-28-11/4	380V/50Hz	11	15	31	120	\$3,697
LPP80-22-7.5/4	380V/50Hz	7.5	10	24	100	\$2,910
LPP80-19-5.5/4	380V/50Hz	5.5	7.5	21.5	80	\$2,781
LPP80-35-15/2	380V/50Hz	15	20	42	130	\$3,646
LPP80-28-11/2	380V/50Hz	11	15	35	125	\$3,367
LPP80-21.5-7.5/2	380V/50Hz	7.5	10	28	119	\$2,503
LPP100-32-22/2	380V/50Hz	22	30	43	190	\$4,059
LPP100-30-18.5/2	380V/50Hz	18.5	24	38	179	\$3,504
LPP100-24-15/2	380V/50Hz	15	20	31	180	\$3,316
LPP100-20-11/2	380V/50Hz	11	15	28	175	\$3,096
LPP100-32-22/4	380V/50Hz	22	30	36	213	\$5,560
LPP100-30-18.5/4	380V/50Hz	18.5	24	33	208	\$4,841
LPP100-25-15/4	380V/50Hz	15	20	28	186	\$4,261
LPP100-21-11/4	380V/50Hz	11	15	23	170	\$3,950
LPP100-16-7.5/4	380V/50Hz	7.5	10	19	150	\$3,152
LPP125-35-30/4	380V/50Hz	30	40	40	279	\$7,143
LPP125-31-22/4	380V/50Hz	22	30	34	260	\$5,996
LPP125-28-18.5/4	380V/50Hz	18.5	24	30	249	\$5,277
LPP125-24-15/4	380V/50Hz	15	20	27	230	\$4,697
LPP125-19-11/4	380V/50Hz	11	15	22	209	\$4,385
LPP150-29-30/4	380V/50Hz	30	40	32	360	\$7,113
LPP150-24.5-22/4	380V/50Hz	22	30	28	324	\$6,062
LPP150-21.5-18.5/4	380V/50Hz	18.5	24	23	290	\$5,340
LPP150-33-37/4	380V/50Hz	37	50	37	390	\$8,104
LPP200-34-75/4	380V/50Hz	75	100	41	659	\$13,425
LPP200-28-55/4	380V/50Hz	55	75	32	656	\$11,298
LPP200-22.5-45/4	380V/50Hz	45	60	27	662	\$9,585

DÖKÜM GÖVDELİ MONOBLOK POMPALAR



Modeli	Güç		Çıkış (mm)	Max.head m	Max.Debi m³/h	Fiyat
	(kW)	(HP)				
XSTm²-125/7 ★	0.75	1	32	17.5	18	\$390
XSTm²-125/11 ★	1.1	1.5	32	22	24	\$404
XSTm²-160/15 ★	1.5	2	32	25.4	18	\$446
XSTm²-160/22 ★	2.2	3	32	31	27	\$547
XSTm²-160/30 ★	3	4	32	35	27	\$570
XSTm40-125/11	1.1	1.5	40	14.7	36	\$493
XSTm40-125/15	1.5	2	40	18.1	42	\$511
XSTm40-125/22	2.2	3	40	24.5	48	\$569
XSTm50-125/22	2.2	3	50	17	72	\$632
XST32-125/7 ★	0.7	1	32	17.5	18	\$392
XST32-125/11 ★	1.1	1.5	32	22	24	\$418
XST32-160/15 ★	1.5	2	32	25.4	18	\$429
XST32-160/22 ★	2.2	3	32	31	24	\$453
XST32-160/30 ★	3	4	32	35	27	\$569
XST32-200/30 ★	3	4	32	44.2	27	\$658
XST32-200/40 ★	4	5.5	32	54.5	27	\$704
XST32-250/55 ★	5.5	7.5	32	79.5	24	\$977
XST32-250/75 ★	7.5	10	32	99.5	24	\$1,053
XST40-125/11	1.1	1.5	40	14.7	36	\$478
XST40-125/15	1.5	2	40	18.1	42	\$514
XST40-125/22	2.2	3	40	24.5	48	\$549
XST40-160/30	3	4	40	31.8	42	\$651
XST40-160/40	4	5.5	40	38	48	\$696
XST40-200/55 ★	5.5	7.5	40	46	42	\$867
XST40-200/75 ★	7.5	10	40	57	48	\$931
XST40-250/92 ★	9.2	12.5	40	64	48	\$1,990
XST40-250/110 ★	11	15	40	72	48	\$1,992
XST40-250/150 ★	15	20	40	84.5	48	\$2,189
XST50-125/22	2.2	3	50	17	72	\$601
XST50-125/30	3	4	50	20	72	\$638
XST50-125/40	4	5.5	50	24	84	\$676
XST50-160/55	5.5	7.5	50	32	84	\$837
XST50-160/75	7.5	10	50	40	90	\$886
XST50-200/92 ★	9.2	12.5	50	50.5	84	\$1,941
XST50-200/110 ★	11	15	50	57.5	90	\$1,944
XST50-250/150 ★	15	20	50	68.5	84	\$2,185
XST50-250/185 ★	18.5	25	50	77	90	\$2,518
XST50-250/220 ★	22	30	50	86.3	90	\$3,005
XST65-125/40	4	5.5	65	19	90	\$767
XST65-125/55	5.5	7.5	65	23	108	\$854
XST65-125/75	7.5	10	65	27	120	\$916
XST65-160/92	9.2	12.5	65	33	120	\$1,910
XST65-160/110	11	15	65	36	120	\$1,910
XST65-160/150	15	20	65	42	138	\$2,105
XST65-200/150	15	20	65	45.5	108	\$2,174
XST65-200/185	18.5	25	65	53	108	\$2,473
XST65-200/220	22	30	65	59	120	\$2,951
XST65-250/220	22	30	65	41.2	138	\$3,143
XST65-250/300	30	40	65	48	138	\$4,013
XST65-250/370	37	50	65	59.5	138	\$4,118
XST80-160/110	11	15	80	27	180	\$1,962
XST80-160/150	15	20	80	32.8	210	\$2,154
XST80-160/185	18.5	25	80	39	210	\$2,482
XST80-200/220	22	30	80	48	210	\$3,173
XST80-200/300	30	40	80	60	210	\$4,073
XST80-250/370	37	50	80	71.5	210	\$4,280
XST80-250/450	45	61	80	80	210	\$5,144
XST80-250/550	55	75	80	92.5	210	\$6,429

Model Kodlama

XST m 32-125 K / 11

- ① Standard Santrifüj Pompa
 ② Tek doz Aşama (m , üç faz için atlanmıştır)
 ③ Çıkış Çapı (mm)
 ④ Çark Nominal Çap (mm)
 ⑤ Genişletilmiş Modeli
 ⑥ Anma gücü (1 / 10 kW)

PİS SU VE FOSEPTİK DRENAJ POMPALARI



Paslanmaz Gövdeli Fosseptik Pompası

Modeli	Güç		Çıkış (mm)	Max.basma yüksekliği m	Max.Debi m3/h	Fiyat
	(KW)	(HP)				
XSP8-7/0.18I	0.18	0.25	32mm	7	0-8	\$159
XSP9-7.5/0.25I	0.25	0.33	32mm	7.5	0-9	\$172
XSP12-8.5/0.45I	0.45	0.6	50mm	8.5	0-12	\$254
XSP18-12/0.75I	0.75	1	50mm	12	0-18	\$306
XSP20-9/1.1I	1.1	1.5	50mm	9	0-20	\$356
XSP16.2-22/1.5I	1.5	2	40mm	22	0-16	\$453
XSP42-17/2.2I	2.2	3	75mm	17	0-40	\$568

* 5 mt Kablolü ve Flatörlü



Paslanmaz Fosseptik Pompası

Modeli	Güç		Çıkış (mm)	Max.basma yüksekliği m	Max.Debi m3/h	Fiyat
	(KW)	(HP)				
XSP9-7.5/0.25S	0.25	0.33	32mm	7.5	0-9	\$423
XSP18-12/0.75S	0.75	1	50mm	12	0-16	\$849
XSP16.2-22/1.5S	1.5	2	40mm	22	0-15	\$920

* 5 mt Kablolü ve Flatörlü



Parçalayıcı Bıçaklı Fosseptik Pompası

Modeli	Güç		Çıkış (mm)	Max.basma yüksekliği m	Max.Debi m3/h	Fiyat
	(KW)	(HP)				
XSP14-7/1.1ID	1.1	1.5	50mm	7.5	0-14	\$352
XSP18-12/1.3ID	1.3	1.75	50mm	12	0-18	\$392
XSP26.4-10/1.8ID	1.8	2.4	75mm	22	0-24	\$528

* 5 mt Kablolü ve Flatörlü



Döküm Gövdeli Fosseptik Pompası

Modeli	Volt / Frekans	Güç		Çıkış Çapı DN	Max.Basma Yüksekliği (m)	Max.Debi m3/h	Fiyat
		kw	HP				
V250F	220V/50Hz	0.25	0.35	50	8	9	\$173
V450F	220V/50Hz	0.45	0.65	50	11	14	\$240
V900F	220V/50Hz	0.9	1.2	50	12	23	\$291

* 5 mt Kablolü ve Flatörlü



Parçalayıcı Bıçaklı Fosseptik Pompası

Modeli	Volt / Frekans	Güç		Çıkış Çapı DN	Max.Basma Yüksekliği (m)	Max.Debi m3/h	Fiyat
		kw	HP				
V1500DF	220V/50HZ	1.5	2	50	15	18	\$557
WQ1800D	380V/50HZ	1.8	2.4	65	25	27	\$558
WQ1800DF	220V/50HZ	1.8	2.4	65	25	27	\$580

* 5 mt Kablolü ve Flatörlü




Modeli	Volt / Frekans	Güç		Çıkış Çapı DN	Max.Basma Yüksekliği (m)	Max.Debi m3/h	Fiyat
		kw	HP				
V2200	380V/50HZ	2.2	3	65	20	30	\$607

PİS SU VE FOSEPTİK DRENAJ POMPALARI



İki Kanallı Döküm
Gövdeli Fosseptik
Pompası

Modeli	Volt / Frekans	Güç		Çıkış Çapı DN	Max.Basma Yüksekliği (m)	Max.Debi m3/h	Fiyat
		kw	HP				
WQ30-11-2.2I	220V/50HZ	2.2	3	80	19	50	\$701
WQ23-12-1.5S	380V/50Hz	1.5	2	80	18	35	\$713
WQ23-15-2.2S	380V/50Hz	2.2	3	80	21	40	\$739
WQ23-20-3S	380V/50Hz	4	4	80	25	45	\$774
WQ25-22-4S	380V/50Hz	4	5.5	80	30	50	\$1,010

* 5 mt Kablolu  Kontrol panosu ve toplu çekvalf ile birlikte kullanınız.

Modeli	Güç		Çıkış (mm)	Max.basma yüksekliği m	Max.Debi m3/h	Fiyat
	(KW)	(HP)				
XQS7.2-8.5/0.25S	0.25	0.33	40/32/25	8.5	0-7	\$478
XQS22.8-12/0.75S	0.75	1	50	12	0-22	\$812

* 10 mt Kablolu ve Flatörü



Paslanmaz Gövdeli
Temiz Su Drenaj
Pompası

Modeli	Güç		Çıkış (mm)	Max.basma yüksekliği m	Max.Debi m3/h	Fiyat
	(KW)	(HP)				
XQS4.5-27/2-0.55I	0.55	0.75	25	27	0-4	\$337
XQS15-30/2-1.1I	1.1	1.5	50	30	15	\$384
XQS14.5-42/3-1.5I	1.5	2	50	42	15	\$478
XQS39-8/0.75I	0.75	1	75	8	35	\$306
XQS15-20/1.1I	1.1	1.5	40/32/25	20	15	\$374
XQS13-34/1.5I	1.5	2	40/32/25	34	13	\$456

* 5 mt Kablolu ve Flatörü



Döküm Gövdeli
Temiz Su Drenaj
Pompası

Modeli	Güç		Çıkış (mm)	Max.basma yüksekliği m	Max.Debi m3/h	Fiyat
	(KW)	(HP)				
QDX1.5-15-0.37A	0.37	0.5	25mm	16	7	\$166
QDX3-18-0.55A	0.55	0.75	25mm	19.2	12	\$197
QDX10-10-0.55A	0.55	0.75	50mm	15.3	17	\$200
QDX15-7-0.55A	0.55	0.75	50mm	8.6	24	\$207
QDX1.5-32-0.75A	0.75	1	25mm	32.5	10	\$219
QDX6-18-0.75A	0.75	1	40mm	19.5	17	\$210
QDX10-16-0.75A	0.75	1	40mm	19.5	17	\$210
QDX15-10-0.75A	0.75	1	50mm	11	28	\$218
QDX25-6-0.75A	0.75	1	65mm	9	32	\$218
QDX10-18-1.1A	1.1	1.5	50mm	25.8	17	\$280
QDX15-14-1.1A	1.1	1.5	65mm	15	30	\$276
QDX40-5.5-1.1A	1.1	1.5	80mm	6.1	42	\$288

* 10 mt Kablolu ve Flatörü

Paslanmaz Gövdeli
Temiz Su Drenaj Pompası



Paslanmaz Kademeli
Temiz Su Drenaj Pompası

Modeli	Volt / Frekans	Güç		Çıkış Çapı DN	Max.Basma Yüksekliği (m)	Max.Debi m3/h	Fiyat
		kw	HP				
QDN10-10-0.75F	220V/50Hz	0.75	1	50	12	24	\$351
QDN10-20-1.5F	220V/50Hz	1.5	2	50	25	24	\$522

* 10 mt Kablolu ve Flatörü



Modeli	Volt / Frekans	Güç		Çıkış Çapı DN	Max.Basma Yüksekliği (m)	Max.Debi m3/h	Fiyat
		kw	HP				
KS22.2	380V/50Hz	2.2	3	40	21	3	\$853
KS35.5	380V/50Hz	5.5	7.5	80	32	3,5	\$1,711

PİS SU VE FOSEPTİK DALGIÇ POMPALARI



WQ(D)0.75 – 7.5 kW

Tıkanmayı önleyen iki kanatlı pervane, bütün aralığı boyunca büyük miktarda katı madde pompalayabilir. Krom kaplama şaft yüksek derecede korozyon ve aşınma direnci sağlar. Isı koruması ile birlikte 4Kw'den az güç tüketimi. Lağım suyu, atık su, yağmur suyu ve katı tahlil, çeşitli kumaşlar, çamur ve katı atıklar barındıran suyun pompalanması için tasarlanmıştır.

Modeli	Çıkış	Voltage	Güç		Max.head m	Max.Debi m³/h	Fiyat
			(KW)	(HP)			
50WQD10-10-0.75	2"	220V	0.75	1	13	28	\$274
50WQ10-10-0.75	2"	380V	0.75	1	13	28	\$274
50WQD8-16-1.1	2"	220V	1.1	1.5	19	25	\$367
50WQ8-16-1.1	2"	380V	1.1	1.5	19	25	\$367
65WQ15-10-1.1	2.5"	380V	1.1	1.5	15	28	\$367
65WQD15-10-1.1	2.5"	220V	1.1	1.5	15	28	\$367
50WQ8-20-1.5	2"	380V	1.5	2	22	25	\$393
50WQD8-20-1.5	2"	220V	1.5	2	22	25	\$393
65WQ15-15-1.5	2.5"	380V	1.5	2	20	35	\$393
65WQD15-15-1.5	2.5"	220V	1.5	2	20	35	\$393
50WQ15-20-2.2	2"	380V	2.2	3	23	38	\$602
65WQ25-17-2.2	2.5"	380V	2.2	3	22	44	\$602
80WQ40-9-2.2	3"	380V	2.2	3	16	65	\$622
50WQ15-26-3	2"	380V	3	4	29	47	\$740
65WQ25-22-3	2.5"	380V	3	4	26	55	\$740
80WQ40-13-3	3"	380V	3	4	21	72	\$759
100WQ60-9-3	4"	380V	3	4	19	88	\$770
65WQ25-28-4	2.5"	380V	4	5.5	32	55	\$967
80WQ40-18-4	3"	380V	4	5.5	24	80	\$972
100WQ60-13-4	4"	380V	4	5.5	24	89	\$984
50WQ15-40-5.5	2"	380V	5.5	7.5	43	50	\$1,233
80WQ30-30-5.5	3"	380V	5.5	7.5	37	47	\$1,233
100WQ65-15-5.5	4"	380V	5.5	7.5	25	135	\$1,264
100WQ45-22-7.5	4"	380V	7.5	10	31	90	\$1,739
150WQ100-10-7.5	6"	380V	7.5	10	20	140	\$1,773
100WQ65-15-5.5(4P)	4"	380V	5.5	7.5	21	145	\$1,770
150WQ110-10-5.5(4P)	6"	380V	5.5	7.5	16	200	\$1,780
100WQ100-15-7.5(4P)	4"	380V	7.5	10	21	170	\$2,244
150WQ150-10-7.5(4P)	6"	380V	7.5	10	16	220	\$2,276



WQ 11 – 45 kW

100WQ100-25-11(4P)	4"	380V	11	15	26	180	\$3,491
150WQ130-15-11(4P)	6"	380V	11	15	20	270	\$3,514
200WQ300-7-11(4P)	8"	380V	11	15	18	360	\$3,623
100WQ100-30-15(4P)	4"	380V	15	20	32	190	\$3,672
150WQ130-20-15(4P)	6"	380V	15	20	23	300	\$3,746
200WQ250-11-15(4P)	8"	380V	15	20	22	380	\$3,829
150WQ180-20-18.5(4P)	6"	380V	18.5	25	26	300	\$4,459
200WQ250-15-18.5(4P)	8"	380V	18.5	25	25	400	\$4,571
150WQ180-25-22(4P)	6"	380V	22	30	28	330	\$4,937
200WQ300-15-22(4P)	8"	380V	22	30	28	450	\$5,039
150WQ180-30-30(4P)	6"	380V	30	40	38	350	\$6,501
200WQ250-22-30(4P)	8"	380V	30	40	34	500	\$6,742
250WQ600-9-30(4P)	10"	380V	30	40	28	600	\$6,987
300WQ800-7-30(4P)	12"	380V	30	40	18	1000	\$7,219
150WQ160-45-37(4P)	6"	380V	37	50	43	380	\$8,112
200WQ350-25-37(4P)	8"	380V	37	50	48	500	\$7,947
250WQ600-12-37(4P)	10"	380V	37	50	32	720	\$8,196
300WQ900-8-37(4P)	12"	380V	37	50	22	1200	\$8,473
200WQ380-28-45(4P)	8"	380V	45	60	38	800	\$8,761
250WQ600-15-45(4P)	10"	380V	45	60	43	600	\$9,616
300WQ800-12-45(4P)	12"	380V	45	60	25	1300	\$9,333

WQ SERİSİ POMPALAR İÇİN KIZAK RAY SİSTEMİ



Kızak Ray Sistemi

Modeli	Boyut		Pompa Modeli	Fiyat
	Pompa Çıkış (mm)	Boru bağlantısı (mm)		
TO50-50	50	50	50WQ	\$180
TO50-65	50	65	50WQ	\$226
TO65-65	65	65	65WQ	\$236
TO65-80	65	80	65WQ	\$288
TO80-80	80	80	80WQ	\$297
TO80-100	80	100	80WQ	\$410
TO100-100	100	100	100WQ	\$469
TO150-150	150	150	150WQ	\$1,053
TO200-200	200	200	200WQ	\$1,328
TO250-250	250	250	250WQ	\$1,839

ÇAMUR DRENAJ POMPALARI



Dalgıç Çamur Pompa

Modeli	Çıkış(mm)	Güç		Max.head m	Max.Debi m³/h	Fiyat
		(KW)	(HP)			
80KBS44	80	4	5.5	14.8	99	\$2,957
100KBS46	100	6	8	16.9	150	\$3,600
150KBS49	150	9	12	21.5	168	\$4,187



Dalgıç Drenaj Pompa

Modeli	Çıkış(mm)	Güç		Max.head m	Max.Debi m³/h	Fiyat
		(KW)	(HP)			
KBZ21.5	50	1.5	2	22	27	\$861
KBZ22.2	50	2.2	3	26	27	\$967
KBZ23.7	50	3.7	5	34	29	\$1,493
KBZ31.5	80	1.5	2	14.5	40	\$879
KBZ32.2	80	2.2	3	21	50	\$996
KBZ33.7	80	3.7	5	29	55	\$1,529
KBZ35.5	80	5.5	7.5	32	70	\$1,932
KBZ43.7	100	3.7	5	18	90	\$1,569
KBZ45.5	100	5.5	7.5	23	105	\$1,979
KBZ47.5	100	7.5	10	40	84	\$2,564
KBZ411	100	11	15	48.5	86.4	\$3,443
KBZ415	100	15	20	56	86.4	\$4,150
KBZ67.5	150	7.5	10	31	124.8	\$2,793
KBZ611	150	11	15	32	147	\$3,542
KBZ615	150	15	20	40	156	\$4,167

PİS SU VE FOSEPTİK DALGIÇ POMPALARI

Yarı Açık Fanlı
Pis Su Pompası



SWE



çark

Açık Fanlı
Pis Su Pompası



çark

Parçalayıcı Bıçaklı
Pis Su Pompası



çark

Kesici

Modeli	Volt / Frekans	Güç		Rated.head m	Rated.Debi m³/h	Fiyat
		(Kw)	Hp			
50SWE8-16-1.1	220V/50HZ	1.1	1.5	16	8	\$629
50SWE8-16-1.1	380V/50HZ	1.1	1.5	16	8	\$628
50SWE8-20-1.5	220V/50HZ	1.5	2	20	8	\$782
50SWE8-20-1.5	380V/50HZ	1.5	2	20	8	\$781
50SWE15-20-2.2	220V/50HZ	2.2	3	20	15	\$835
50SWE15-20-2.2	380V/50HZ	2.2	3	20	15	\$787
50SWE15-25-3	380V/50HZ	3	4	26	15	\$890
65SWE15-10-1.1	220V/50HZ	1.1	1.5	10	15	\$664
65SWE15-10-1.1	380V/50HZ	1.1	1.5	10	15	\$647
65SWE15-15-1.5	220V/50HZ	1.5	2	15	15	\$824
65SWE15-15-1.5	380V/50HZ	1.5	2	15	15	\$822
65SWE25-17-2.2	380V/50HZ	2.2	3	17	25	\$809
65SWE25-22-3	380V/50HZ	3	4	22	25	\$913
65SWE25-27-4	380V/50HZ	4	5.5	28	25	\$945
80SWE40-9-2.2	380V/50HZ	2.2	3	9	40	\$838
80SWE40-13-3	380V/50HZ	3	4	13	40	\$899
80SWE40-18-4	380V/50HZ	4	5.5	18	40	\$974
50SWUm9-6-0.37	220V/50HZ	0.37	0.5	6	9	\$589
50SWU9-6-0.37	380V/50HZ	0.37	0.5	6	9	\$585
50SWUm13.2-4-0.37	220V/50HZ	0.37	0.5	4	13.2	\$596
50SWU13.2-4-0.37	380V/50HZ	0.75	1	4	13.2	\$593
50SWUm12-8-0.75	220V/50HZ	0.75	1	8	12	\$609
50SWU12-8-0.75	380V/50HZ	0.75	1	8	12	\$611
50SWUm15-5.5-0.75	220V/50HZ	0.75	1	5.5	15	\$616
50SWU15-5.5-0.75	380V/50HZ	0.75	1	5.5	15	\$619
65SWUm24-8.5-1.5	220V/50HZ	1.5	2	8.5	24	\$837
65SWU24-8.5-1.5	380V/50HZ	1.5	2	8.5	24	\$836
65SWUm24-12.5-2.2	220V/50HZ	2.2	3	12.5	24	\$871
65SWU24-12.5-2.2	380V/50HZ	2.2	3	12.5	24	\$822
80SWUm30-4.5-1.5	220V/50HZ	1.5	2	4.5	30	\$838
80SWU30-4.5-1.5	380V/50HZ	1.5	2	4.5	30	\$836
80SWUm30-7-2.2	220V/50HZ	2.2	3	7	30	\$872
80SWU30-7-2.2	380V/50HZ	2.2	3	7	30	\$823
65SWU30-11-3	380V/50HZ	3	4	11	30	\$926
65SWU30-16-4	380V/50HZ	4	5.5	16	30	\$958
32SWPm3.6-17-1.1/QG	220V/50HZ	1.1	1.5	17	3.6	\$677
32SWP3.6-17-1.1/QG	380V/50HZ	1.1	1.5	17	3.6	\$677
32SWPm3.6-23-1.5/QG	220V/50HZ	1.5	2	23	3.6	\$825
32SWP3.6-23-1.5/QG	380V/50HZ	1.5	2	23	3.6	\$821
32SWPm3.6-30-2.2/QG	220V/50HZ	2.2	3	30	3.6	\$873
32SWP3.6-30-2.2/QG	380V/50HZ	2.2	3	30	3.6	\$813
50SWP12-19-2.2/QG	380V/50HZ	2.2	3	19	12	\$826
50SWP12-22-3/QG	380V/50HZ	3	4	22	12	\$926
50SWP12-30-4/QG	380V/50HZ	4	5.5	30	12	\$963

DİK MİLLİ NORİL FANLI KADEMELİ POMPA



Noril Fanlı

Modeli	Volt / Frekans	Güç		Max.head	Rated.Debi	Fiyat
		(Kw)	Hp	m	m³/h	
EVPm2-2	220-240V/50Hz	0.37	0.5	24	2	\$270
EVPm2-3	220-240V/50Hz	0.55	0.75	36	2	\$290
EVPm2-4	220-240V/50Hz	0.75	1	48	2	\$307
EVPm2-5	220-240V/50Hz	1	1.5	59	2	\$326
EVPm2-6	220-240V/50Hz	1	1.5	69	2	\$334
EVPm2-7	220-240V/50Hz	1.1	1.5	82	2	\$389
EVPm2-8	220-240V/50Hz	1.5	2	94	2	\$411
EVPm2-9	220-240V/50Hz	1.5	2	105	2	\$418
EVPm4-2	220-240V/50Hz	0.55	0.75	24	4	\$282
EVPm4-3	220-240V/50Hz	0.75	1	37	4	\$300
EVPm4-4	220-240V/50Hz	1	1.5	47	4	\$319
EVPm4-5	220-240V/50Hz	1.5	2	61	4	\$387
EVPm4-6	220-240V/50Hz	1.5	2	74	4	\$395
EVPm6-3	220-240V/50Hz	1.1	1.5	30	6	\$372
EVPm6-4	220-240V/50Hz	1.5	2	40	6	\$406
EVP2-2	380-415V/50Hz	0.37	0.5	24	2	\$263
EVP2-3	380-415V/50Hz	0.55	0.75	36	2	\$292
EVP2-4	380-415V/50Hz	0.75	1	48	2	\$306
EVP2-5	380-415V/50Hz	1	1.5	59	2	\$329
EVP2-6	380-415V/50Hz	1	1.5	69	2	\$337
EVP2-7	380-415V/50Hz	1.1	1.5	82	2	\$377
EVP2-8	380-415V/50Hz	1.5	2	94	2	\$406
EVP2-9	380-415V/50Hz	1.5	2	105	2	\$413
EVP4-2	380-415V/50Hz	0.55	0.75	24	4	\$284
EVP4-3	380-415V/50Hz	0.75	1	37	4	\$299
EVP4-4	380-415V/50Hz	1	1.5	47	4	\$321
EVP4-5	380-415V/50Hz	1.5	2	61	4	\$383
EVP4-6	380-415V/50Hz	1.5	2	74	4	\$390
EVP4-7	380-415V/50Hz	2.2	3	86	4	\$424
EVP4-8	380-415V/50Hz	2.2	3	98	4	\$432
EVP6-3	380-415V/50Hz	1.1	1.5	30	6	\$359
EVP6-4	380-415V/50Hz	1.5	2	40	6	\$402
EVP6-5	380-415V/50Hz	2.2	3	50	6	\$434
EVP6-6	380-415V/50Hz	2.2	3	58	6	\$442
EVP6-7	380-415V/50Hz	3	4	68	6	\$578
EVP6-8	380-415V/50Hz	3	4	78	6	\$592

DİK MİLLİ NORİL FANLI KADEMELİ POMPA



Noril Fanlı

Modeli	Volt / Frekans	Güç		Max.head m	Rated.Debi m³/h	Fiyat
		(Kw)	Hp			
EVPm6H-3	220-240V/50Hz	1.1	1.5	39	6	\$382
EVPm6H-4	220-240V/50Hz	1.5	2	52	6	\$405
EVPm6H-5	220-240V/50Hz	1.8	2.5	64	6	\$462
EVP6H-3	380-415V/50Hz	1.1	1.5	39	6	\$375
EVP6H-4	380-415V/50Hz	1.5	2	52	6	\$405
EVP6H-5	380-415V/50Hz	1.8	2.5	64	6	\$444
EVP6H-6	380-415V/50Hz	2.2	3	76	6	\$461
EVP6H-8	380-415V/50Hz	3	4	103	6	\$635
EVP6H-10	380-415V/50Hz	4	5.5	130	6	\$729
EVP10H-3	380-415V/50Hz	3	4	56	10	\$632
EVP10H-4	380-415V/50Hz	4	5.5	75	10	\$684
EVP10H-5	380-415V/50Hz	5.5	7.5	93	10	\$846
EVP10H-6	380-415V/50Hz	5.5	7.5	113	10	\$865
EVP10H-7	380-415V/50Hz	7.5	10	132	10	\$929
EVP10H-8	380-415V/50Hz	7.5	10	150	10	\$948

DİK MİLLİ PASLANMAZ FANLI KADEMELİ POMPA



LVS

Su ile Temas Eden
Tüm Parçalar
Paslanmaz

Modeli	Volt / Frekans	Güç		Max.basma yüksekliği	Nominal.Debi m³/h	Fiyat
		(Kw)	Hp			
LVS1-2	380V/50HZ	0.37	0.5	12	1	\$818
LVS1-3	380V/50HZ	0.37	0.5	18	1	\$820
LVS1-4	380V/50HZ	0.37	0.5	24	1	\$836
LVS1-5	380V/50HZ	0.37	0.5	30	1	\$851
LVS1-6	380V/50HZ	0.37	0.5	36	1	\$867
LVS1-7	380V/50HZ	0.37	0.5	42	1	\$882
LVS1-8	380V/50HZ	0.55	0.75	48	1	\$911
LVS1-9	380V/50HZ	0.55	0.75	54	1	\$926
LVS1-10	380V/50HZ	0.55	0.75	60	1	\$971
LVS1-11	380V/50HZ	0.55	0.75	65	1	\$990
LVS1-12	380V/50HZ	0.55	0.75	73	1	\$1,097
LVS1-13	380V/50HZ	0.55	0.75	78	1	\$1,114
LVS1-15	380V/50HZ	0.55	0.75	90	1	\$1,144
LVS1-17	380V/50HZ	1.1	1.5	103	1	\$1,204
LVS1-19	380V/50HZ	1.1	1.5	115	1	\$1,217
LVS1-21	380V/50HZ	1.1	1.5	126	1	\$1,297
LVS1-23	380V/50HZ	1.1	1.5	137	1	\$1,330
LVS1-25	380V/50HZ	1.5	2	153	1	\$1,463
LVS1-27	380V/50HZ	1.5	2	165	1	\$1,496
LVS1-30	380V/50HZ	1.5	2	182	1	\$1,571
LVS1-33	380V/50HZ	2.2	3	203	1	\$1,643
LVS1-36	380V/50HZ	2.2	3	221	1	\$1,693



LVR

Paslanmaz Fanlı
Döküm Taban ve
Pompa Kapağı

LVR1-2	380V/50HZ	0.37	0.5	12	1	\$588
LVR1-3	380V/50HZ	0.37	0.5	18	1	\$590
LVR1-4	380V/50HZ	0.37	0.5	24	1	\$607
LVR1-5	380V/50HZ	0.37	0.5	30	1	\$623
LVR1-6	380V/50HZ	0.37	0.5	36	1	\$637
LVR1-7	380V/50HZ	0.37	0.5	42	1	\$652
LVR1-8	380V/50HZ	0.55	0.75	48	1	\$678
LVR1-9	380V/50HZ	0.55	0.75	54	1	\$698
LVR1-10	380V/50HZ	0.55	0.75	60	1	\$744
LVR1-11	380V/50HZ	0.55	0.75	65	1	\$760
LVR1-12	380V/50HZ	0.55	0.75	73	1	\$870
LVR1-13	380V/50HZ	0.55	0.75	78	1	\$885
LVR1-15	380V/50HZ	0.55	0.75	90	1	\$914
LVR1-17	380V/50HZ	1.1	1.5	103	1	\$977
LVR1-19	380V/50HZ	1.1	1.5	115	1	\$1,008
LVR1-21	380V/50HZ	1.1	1.5	126	1	\$1,069
LVR1-23	380V/50HZ	1.1	1.5	137	1	\$1,104
LVR1-25	380V/50HZ	1.5	2	153	1	\$1,237
LVR1-27	380V/50HZ	1.5	2	165	1	\$1,260
LVR1-30	380V/50HZ	1.5	2	182	1	\$1,345
LVR1-33	380V/50HZ	2.2	3	203	1	\$1,410
LVR1-36	380V/50HZ	2.2	3	221	1	\$1,461

DİK MİLLİ PASLANMAZ FANLI KADEMELİ POMPA



LVS

Su ile Temas Eden
Tüm Parçalar
Paslanmaz

Modeli	Volt / Frekans	Güç		Max.basma yüksekliği	Nominal.Debi m³/h	Fiyat
		(Kw)	Hp			
LVS2-2	380V/50HZ	0.37	0.5	18	2	\$819
LVS2-3	380V/50HZ	0.37	0.5	27	2	\$822
LVS2-4	380V/50HZ	0.55	0.75	36	2	\$851
LVS2-5	380V/50HZ	0.55	0.75	45	2	\$867
LVS2-6	380V/50HZ	0.75	1	53	2	\$976
LVS2-7	380V/50HZ	0.75	1	63	2	\$992
LVS2-8	380V/50HZ	1.1	1.5	71	2	\$1,032
LVS2-9	380V/50HZ	1.1	1.5	80	2	\$1,049
LVS2-10	380V/50HZ	1.1	1.5	89	2	\$1,093
LVS2-11	380V/50HZ	1.1	1.5	98	2	\$1,113
LVS2-12	380V/50HZ	1.5	2	107	2	\$1,227
LVS2-13	380V/50HZ	1.5	2	116	2	\$1,247
LVS2-14	380V/50HZ	1.5	2	125	2	\$1,260
LVS2-15	380V/50HZ	1.5	2	134	2	\$1,278
LVS2-16	380V/50HZ	2.2	3	143	2	\$1,328
LVS2-17	380V/50HZ	2.2	3	152	2	\$1,335
LVS2-18	380V/50HZ	2.2	3	161	2	\$1,352
LVS2-19	380V/50HZ	2.2	3	170	2	\$1,367
LVS2-20	380V/50HZ	2.2	3	179	2	\$1,414
LVS2-21	380V/50HZ	2.2	3	188	2	\$1,428
LVS2-22	380V/50HZ	2.2	3	197	2	\$1,445
LVS2-23	380V/50HZ	3	4	205	2	\$1,576
LVS2-24	380V/50HZ	3	4	214	2	\$1,599
LVS2-25	380V/50HZ	3	4	223	2	\$1,614
LVS2-26	380V/50HZ	3	4	232	2	\$1,632



LVR

Paslanmaz Fanlı
Döküm Taban ve
Pompa Kapağı

LVR2-2	380V/50HZ	0.37	0.5	18	2	\$589
LVR2-3	380V/50HZ	0.37	0.5	27	2	\$591
LVR2-4	380V/50HZ	0.55	0.75	36	2	\$621
LVR2-5	380V/50HZ	0.55	0.75	45	2	\$637
LVR2-6	380V/50HZ	0.75	1	53	2	\$749
LVR2-7	380V/50HZ	0.75	1	63	2	\$765
LVR2-8	380V/50HZ	1.1	1.5	71	2	\$790
LVR2-9	380V/50HZ	1.1	1.5	80	2	\$822
LVR2-10	380V/50HZ	1.1	1.5	89	2	\$868
LVR2-11	380V/50HZ	1.1	1.5	98	2	\$886
LVR2-12	380V/50HZ	1.5	2	107	2	\$1,005
LVR2-13	380V/50HZ	1.5	2	116	2	\$1,021
LVR2-14	380V/50HZ	1.5	2	125	2	\$1,034
LVR2-15	380V/50HZ	1.5	2	134	2	\$1,052
LVR2-16	380V/50HZ	2.2	3	143	2	\$1,093
LVR2-17	380V/50HZ	2.2	3	152	2	\$1,109
LVR2-18	380V/50HZ	2.2	3	161	2	\$1,127
LVR2-19	380V/50HZ	2.2	3	170	2	\$1,140
LVR2-20	380V/50HZ	2.2	3	179	2	\$1,188
LVR2-21	380V/50HZ	2.2	3	188	2	\$1,202
LVR2-22	380V/50HZ	2.2	3	197	2	\$1,229
LVR2-23	380V/50HZ	3	4	205	2	\$1,340
LVR2-24	380V/50HZ	3	4	214	2	\$1,364
LVR2-25	380V/50HZ	3	4	223	2	\$1,387
LVR2-26	380V/50HZ	3	4	232	2	\$1,404

DİK MİLLİ PASLANMAZ FANLI KADEMELİ POMPA



LVS

Su ile Temas Eden
Tüm Parçalar
Paslanmaz

Modeli	Volt / Frekans	Güç		Max.basma yüksekliği	Nominal.Debi m³/h	Fiyat
		(Kw)	Hp			
LVS3-2	380V/50HZ	0.37	0.5	13	3	\$818
LVS3-3	380V/50HZ	0.37	0.5	19	3	\$820
LVS3-4	380V/50HZ	0.37	0.5	25	3	\$836
LVS3-5	380V/50HZ	0.37	0.5	31	3	\$851
LVS3-6	380V/50HZ	0.55	0.75	37	3	\$880
LVS3-7	380V/50HZ	0.55	0.75	43	3	\$896
LVS3-8	380V/50HZ	0.75	0.75	51	3	\$1,005
LVS3-9	380V/50HZ	0.75	0.75	56	3	\$1,021
LVS3-10	380V/50HZ	0.75	1	62	3	\$1,067
LVS3-11	380V/50HZ	1.1	1.5	69	3	\$1,109
LVS3-12	380V/50HZ	1.1	1.5	75	3	\$1,121
LVS3-13	380V/50HZ	1.1	1.5	80	3	\$1,141
LVS3-15	380V/50HZ	1.1	1.5	92	3	\$1,171
LVS3-17	380V/50HZ	1.5	2	107	3	\$1,285
LVS3-19	380V/50HZ	1.5	2	119	3	\$1,337
LVS3-21	380V/50HZ	2.2	3	133	3	\$1,423
LVS3-23	380V/50HZ	2.2	3	146	3	\$1,451
LVS3-25	380V/50HZ	2.2	3	158	3	\$1,488
LVS3-27	380V/50HZ	2.2	3	170	3	\$1,521
LVS3-29	380V/50HZ	2.2	3	182	3	\$1,574
LVS3-31	380V/50HZ	3	4	197	3	\$1,734
LVS3-33	380V/50HZ	3	4	210	3	\$1,761
LVS3-36	380V/50HZ	3	4	228	3	\$1,797



LVR

Paslanmaz Fanlı
Döküm Taban ve
Pompa Kapağı

LVR3-2	380V/50HZ	0.37	0.5	13	3	\$585
LVR3-3	380V/50HZ	0.37	0.5	19	3	\$590
LVR3-4	380V/50HZ	0.37	0.5	25	3	\$606
LVR3-5	380V/50HZ	0.37	0.5	31	3	\$621
LVR3-6	380V/50HZ	0.55	0.75	37	3	\$650
LVR3-7	380V/50HZ	0.55	0.75	43	3	\$667
LVR3-8	380V/50HZ	0.75	0.75	51	3	\$778
LVR3-9	380V/50HZ	0.75	0.75	56	3	\$794
LVR3-10	380V/50HZ	0.75	1	62	3	\$838
LVR3-11	380V/50HZ	1.1	1.5	69	3	\$881
LVR3-12	380V/50HZ	1.1	1.5	75	3	\$895
LVR3-13	380V/50HZ	1.1	1.5	80	3	\$910
LVR3-15	380V/50HZ	1.1	1.5	92	3	\$946
LVR3-17	380V/50HZ	1.5	2	107	3	\$1,080
LVR3-19	380V/50HZ	1.5	2	119	3	\$1,111
LVR3-21	380V/50HZ	2.2	3	133	3	\$1,196
LVR3-23	380V/50HZ	2.2	3	146	3	\$1,231
LVR3-25	380V/50HZ	2.2	3	158	3	\$1,262
LVR3-27	380V/50HZ	2.2	3	170	3	\$1,285
LVR3-29	380V/50HZ	2.2	3	182	3	\$1,356
LVR3-31	380V/50HZ	3	4	197	3	\$1,500
LVR3-33	380V/50HZ	3	4	210	3	\$1,520
LVR3-36	380V/50HZ	3	4	228	3	\$1,572

DİK MİLLİ PASLANMAZ FANLI KADEMELİ POMPA



LVS

Su ile Temas Eden
Tüm Parçalar
Paslanmaz

Modeli	Volt / Frekans	Güç		Max.basma yüksekliği	Nominal.Debi m³/h	Fiyat
		(Kw)	Hp			
LVS4-2	380V/50HZ	0.37	0.5	19	4	\$816
LVS4-3	380V/50HZ	0.55	0.75	28	4	\$850
LVS4-4	380V/50HZ	0.75	1	38	4	\$964
LVS4-5	380V/50HZ	1.1	1.5	47	4	\$1,010
LVS4-6	380V/50HZ	1.1	1.5	56	4	\$1,029
LVS4-7	380V/50HZ	1.5	2	66	4	\$1,152
LVS4-8	380V/50HZ	1.5	2	74	4	\$1,202
LVS4-9	380V/50HZ	2.2	3	86	4	\$1,248
LVS4-10	380V/50HZ	2.2	3	96	4	\$1,268
LVS4-11	380V/50HZ	2.2	3	105	4	\$1,290
LVS4-12	380V/50HZ	2.2	3	114	4	\$1,313
LVS4-13	380V/50HZ	3	4	123	4	\$1,473
LVS4-14	380V/50HZ	3	4	136	4	\$1,500
LVS4-15	380V/50HZ	3	4	142	4	\$1,522
LVS4-16	380V/50HZ	3	4	152	4	\$1,544
LVS4-17	380V/50HZ	4	5.5	163	4	\$1,610
LVS4-18	380V/50HZ	4	5.5	175	4	\$1,647
LVS4-19	380V/50HZ	4	5.5	183	4	\$1,672
LVS4-20	380V/50HZ	4	5.5	192	4	\$1,687
LVS4-21	380V/50HZ	4	5.5	203	4	\$1,713
LVS4-22	380V/50HZ	4	5.5	211	4	\$1,728



LVR

Paslanmaz Fanlı
Döküm Taban ve
Pompa Kapağı

LVR4-2	380V/50HZ	0.37	0.5	19	4	\$586
LVR4-3	380V/50HZ	0.55	0.75	28	4	\$620
LVR4-4	380V/50HZ	0.75	1	38	4	\$737
LVR4-5	380V/50HZ	1.1	1.5	47	4	\$782
LVR4-6	380V/50HZ	1.1	1.5	56	4	\$803
LVR4-7	380V/50HZ	1.5	2	66	4	\$926
LVR4-8	380V/50HZ	1.5	2	74	4	\$976
LVR4-9	380V/50HZ	2.2	3	86	4	\$1,022
LVR4-10	380V/50HZ	2.2	3	96	4	\$1,043
LVR4-11	380V/50HZ	2.2	3	105	4	\$1,064
LVR4-12	380V/50HZ	2.2	3	114	4	\$1,087
LVR4-13	380V/50HZ	3	4	123	4	\$1,251
LVR4-14	380V/50HZ	3	4	136	4	\$1,272
LVR4-15	380V/50HZ	3	4	142	4	\$1,291
LVR4-16	380V/50HZ	3	4	152	4	\$1,316
LVR4-17	380V/50HZ	4	5.5	163	4	\$1,393
LVR4-18	380V/50HZ	4	5.5	175	4	\$1,402
LVR4-19	380V/50HZ	4	5.5	183	4	\$1,444
LVR4-20	380V/50HZ	4	5.5	192	4	\$1,459
LVR4-21	380V/50HZ	4	5.5	203	4	\$1,484
LVR4-22	380V/50HZ	4	5.5	211	4	\$1,501

DİK MİLLİ PASLANMAZ FANLI KADEMELİ POMPA



LVS

Su ile Temas Eden
Tüm Parçalar
Paslanmaz

Modeli	Volt / Frekans	Güç		Max.basma yüksekliği	Nominal.Debi m³/h	Fiyat
		(Kw)	Hp			
LVS5-2	380V/50HZ	0.37	0.5	13	5	\$814
LVS5-3	380V/50HZ	0.55	0.75	19	5	\$849
LVS5-4	380V/50HZ	0.55	0.75	26	5	\$868
LVS5-5	380V/50HZ	0.75	1	33	5	\$982
LVS5-6	380V/50HZ	1.1	1.5	40	5	\$1,029
LVS5-7	380V/50HZ	1.1	1.5	46	5	\$1,051
LVS5-8	380V/50HZ	1.1	1.5	53	5	\$1,100
LVS5-9	380V/50HZ	1.5	2	60	5	\$1,224
LVS5-10	380V/50HZ	1.5	2	67	5	\$1,244
LVS5-11	380V/50HZ	2.2	3	74	5	\$1,291
LVS5-12	380V/50HZ	2.2	3	81	5	\$1,313
LVS5-13	380V/50HZ	2.2	3	88	5	\$1,362
LVS5-14	380V/50HZ	2.2	3	95	5	\$1,383
LVS5-15	380V/50HZ	2.2	3	101	5	\$1,397
LVS5-16	380V/50HZ	2.2	3	108	5	\$1,427
LVS5-18	380V/50HZ	3	4	122	5	\$1,617
LVS5-20	380V/50HZ	3	4	135	5	\$1,657
LVS5-22	380V/50HZ	4	5.5	150	5	\$1,730
LVS5-24	380V/50HZ	4	5.5	163	5	\$1,805
LVS5-26	380V/50HZ	4	5.5	176	5	\$1,850
LVS5-29	380V/50HZ	4	5.5	198	5	\$1,953



LVR

Paslanmaz Fanlı
Döküm Taban ve
Pompa Kapağı

LVR5-2	380V/50HZ	0.37	0.5	13	5	\$586
LVR5-3	380V/50HZ	0.55	0.75	19	5	\$619
LVR5-4	380V/50HZ	0.55	0.75	26	5	\$640
LVR5-5	380V/50HZ	0.75	1	33	5	\$755
LVR5-6	380V/50HZ	1.1	1.5	40	5	\$802
LVR5-7	380V/50HZ	1.1	1.5	46	5	\$824
LVR5-8	380V/50HZ	1.1	1.5	53	5	\$871
LVR5-9	380V/50HZ	1.5	2	60	5	\$999
LVR5-10	380V/50HZ	1.5	2	67	5	\$1,019
LVR5-11	380V/50HZ	2.2	3	74	5	\$1,064
LVR5-12	380V/50HZ	2.2	3	81	5	\$1,088
LVR5-13	380V/50HZ	2.2	3	88	5	\$1,136
LVR5-14	380V/50HZ	2.2	3	95	5	\$1,157
LVR5-15	380V/50HZ	2.2	3	101	5	\$1,179
LVR5-16	380V/50HZ	2.2	3	108	5	\$1,196
LVR5-18	380V/50HZ	3	4	122	5	\$1,390
LVR5-20	380V/50HZ	3	4	135	5	\$1,431
LVR5-22	380V/50HZ	4	5.5	150	5	\$1,503
LVR5-24	380V/50HZ	4	5.5	163	5	\$1,578
LVR5-26	380V/50HZ	4	5.5	176	5	\$1,622
LVR5-29	380V/50HZ	4	5.5	198	5	\$1,713

DİK MİLLİ PASLANMAZ FANLI KADEMELİ POMPA



LVS

Su ile Temas Eden
Tüm Parçalar
Paslanmaz

Modeli	Volt / Frekans	Güç		Max.basma yüksekliği	Nominal.Debi m³/h	Fiyat
		(Kw)	Hp			
LVS10-2	380V/50HZ	0.75	1	20	10	\$1,218
LVS10-3	380V/50HZ	1.1	1.5	30	10	\$1,266
LVS10-4	380V/50HZ	1.5	2	40	10	\$1,409
LVS10-5	380V/50HZ	2.2	3	51	10	\$1,464
LVS10-6	380V/50HZ	2.2	3	61	10	\$1,496
LVS10-7	380V/50HZ	3	4	72	10	\$1,642
LVS10-8	380V/50HZ	3	4	82	10	\$1,672
LVS10-9	380V/50HZ	3	4	92	10	\$1,743
LVS10-10	380V/50HZ	4	5.5	102	10	\$1,806
LVS10-12	380V/50HZ	4	5.5	122	10	\$1,880
LVS10-14	380V/50HZ	5.5	7.5	143	10	\$2,291
LVS10-16	380V/50HZ	5.5	7.5	163	10	\$2,407
LVS10-18	380V/50HZ	7.5	10	185	10	\$2,537
LVS10-20	380V/50HZ	7.5	10	206	10	\$2,598
LVS10-22	380V/50HZ	7.5	10	226	10	\$2,664

LVR10-2	380V/50HZ	0.75	1	20	10	\$928
LVR10-3	380V/50HZ	1.1	1.5	30	10	\$985
LVR10-4	380V/50HZ	1.5	2	40	10	\$1,120
LVR10-5	380V/50HZ	2.2	3	51	10	\$1,176
LVR10-6	380V/50HZ	2.2	3	61	10	\$1,206
LVR10-7	380V/50HZ	3	4	72	10	\$1,356
LVR10-8	380V/50HZ	3	4	82	10	\$1,387
LVR10-9	380V/50HZ	3	4	92	10	\$1,466
LVR10-10	380V/50HZ	4	5.5	102	10	\$1,531
LVR10-12	380V/50HZ	4	5.5	122	10	\$1,594
LVR10-14	380V/50HZ	5.5	7.5	143	10	\$1,975
LVR10-16	380V/50HZ	5.5	7.5	163	10	\$2,126
LVR10-18	380V/50HZ	7.5	10	185	10	\$2,256
LVR10-20	380V/50HZ	7.5	10	206	10	\$2,317
LVR10-22	380V/50HZ	7.5	10	226	10	\$2,382



LVR

Paslanmaz Fanlı
Döküm Taban ve
Pompa Kapağı

LVS15-1	380V/50HZ	1.1	1.5	15	15	\$1,322
LVS15-2	380V/50HZ	2.2	3	28	15	\$1,468
LVS15-3	380V/50HZ	3	4	42	15	\$1,627
LVS15-4	380V/50HZ	4	5.5	58	15	\$1,705
LVS15-5	380V/50HZ	4	5.5	70	15	\$1,750
LVS15-6	380V/50HZ	5.5	7.5	83	15	\$2,144
LVS15-7	380V/50HZ	5.5	7.5	98	15	\$2,246
LVS15-8	380V/50HZ	7.5	10	112	15	\$2,361
LVS15-9	380V/50HZ	7.5	10	125	15	\$2,402
LVS15-10	380V/50HZ	11	15	140	15	\$3,083
LVS15-12	380V/50HZ	11	15	168	15	\$3,230
LVS15-14	380V/50HZ	11	15	194	15	\$3,318
LVS15-17	380V/50HZ	15	20	237	15	\$3,686

DİK MİLLİ PASLANMAZ FANLI KADEMELİ POMPA



LVS

Su ile Temas Eden
Tüm Parçalar
Paslanmaz

Modeli	Volt / Frekans	Güç		Max.basma yüksekliği	Nominal.Debi m³/h	Fiyat
		(Kw)	Hp			
LVR15-1	380V/50HZ	1.1	1.5	15	15	\$982
LVR15-2	380V/50HZ	2.2	3	28	15	\$1,131
LVR15-3	380V/50HZ	3	4	42	15	\$1,288
LVR15-4	380V/50HZ	4	5.5	58	15	\$1,369
LVR15-5	380V/50HZ	4	5.5	70	15	\$1,416
LVR15-6	380V/50HZ	5.5	7.5	83	15	\$1,816
LVR15-7	380V/50HZ	5.5	7.5	98	15	\$1,916
LVR15-8	380V/50HZ	7.5	10	112	15	\$2,031
LVR15-9	380V/50HZ	7.5	10	125	15	\$2,075
LVR15-10	380V/50HZ	11	15	140	15	\$2,864
LVR15-12	380V/50HZ	11	15	168	15	\$3,012
LVR15-14	380V/50HZ	11	15	194	15	\$3,099
LVR15-17	380V/50HZ	15	20	237	15	\$3,467

LVS20-1	380V/50HZ	1.1	1.5	13	20	\$1,322
LVS20-2	380V/50HZ	2.2	3	28	20	\$1,468
LVS20-3	380V/50HZ	4	5.5	43	20	\$1,657
LVS20-4	380V/50HZ	5.5	7.5	58	20	\$2,049
LVS20-5	380V/50HZ	5.5	7.5	73	20	\$2,096
LVS20-6	380V/50HZ	7.5	10	87	20	\$2,214
LVS20-7	380V/50HZ	7.5	10	102	20	\$2,314
LVS20-8	380V/50HZ	11	15	117	20	\$2,981
LVS20-10	380V/50HZ	11	15	146	20	\$3,085
LVS20-12	380V/50HZ	15	20	175	20	\$3,440
LVS20-14	380V/50HZ	15	20	204	20	\$3,529
LVS20-17	380V/50HZ	18	24	249	20	\$4,046

LVR20-1	380V/50HZ	1.1	1.5	13	20	\$983
LVR20-2	380V/50HZ	2.2	3	28	20	\$1,131
LVR20-3	380V/50HZ	4	5.5	43	20	\$1,322
LVR20-4	380V/50HZ	5.5	7.5	58	20	\$1,719
LVR20-5	380V/50HZ	5.5	7.5	73	20	\$1,766
LVR20-6	380V/50HZ	7.5	10	87	20	\$1,884
LVR20-7	380V/50HZ	7.5	10	102	20	\$1,985
LVR20-8	380V/50HZ	11	15	117	20	\$2,763
LVR20-10	380V/50HZ	11	15	146	20	\$2,867
LVR20-12	380V/50HZ	15	20	175	20	\$3,224
LVR20-14	380V/50HZ	15	20	204	20	\$3,310
LVR20-17	380V/50HZ	18	24	249	20	\$3,828



LVR

Paslanmaz Fanlı
Döküm Taban ve
Pompa Kapağı

LVS32-1-1	380V/50HZ	1.5	2	15	32	\$2,304
LVS32-1	380V/50HZ	2.2	3	18	32	\$2,328
LVS32-2-2	380V/50HZ	3	4	31	32	\$2,530
LVS32-2	380V/50HZ	4	5.5	37	32	\$2,584
LVS32-3-2	380V/50HZ	5.5	7.5	50	32	\$3,153
LVS32-3	380V/50HZ	5.5	7.5	55.5	32	\$3,153
LVS32-4-2	380V/50HZ	7.5	10	68.5	32	\$3,377
LVS32-4	380V/50HZ	7.5	10	74.5	32	\$3,377
LVS32-5-2	380V/50HZ	11	15	88.5	32	\$4,159
LVS32-5	380V/50HZ	11	15	94.5	32	\$4,159
LVS32-6-2	380V/50HZ	11	15	107	32	\$4,315
LVS32-6	380V/50HZ	11	15	113	32	\$4,315
LVS32-7-2	380V/50HZ	15	20	127	32	\$4,686

DİK MİLLİ PASLANMAZ FANLI KADEMELİ POMPA



LVS

Su ile Temas Eden
Tüm Parçalar
Paslanmaz

Modeli	Volt / Frekans	Güç		Max.basma yükseklği	Nominal.Debi m³/h	Fiyat
		(Kw)	Hp			
LVS32-7	380V/50HZ	15	20	133	32	\$4,687
LVS32-8-2	380V/50HZ	15	20	145	32	\$4,909
LVS32-8	380V/50HZ	15	20	151	32	\$4,909
LVS32-9-2	380V/50HZ	18.5	24	165	32	\$5,437
LVS32-9	380V/50HZ	18.5	24	171	32	\$5,438
LVS32-10-2	380V/50HZ	18.5	24	184	32	\$5,615
LVS32-10	380V/50HZ	18.5	24	190	32	\$5,616
LVS32-11-2	380V/50HZ	22	30	203	32	\$6,363
LVS32-11	380V/50HZ	22	30	209	32	\$6,366
LVS32-12-2	380V/50HZ	22	30	222	32	\$6,513
LVS32-12	380V/50HZ	22	30	227	32	\$6,513
LVS32-13-2	380V/50HZ	30	40	244	32	\$7,696
LVS32-13	380V/50HZ	30	40	250	32	\$7,695
LVS32-14-2	380V/50HZ	30	40	263	32	\$7,857
LVS32-14	380V/50HZ	30	40	269	32	\$7,857

LVR32-1-1	380V/50HZ	1.5	2	15	32	\$1,444
LVR32-1	380V/50HZ	2.2	3	18	32	\$1,469
LVR32-2-2	380V/50HZ	3	4	31	32	\$1,740
LVR32-2	380V/50HZ	4	5.5	37	32	\$1,773
LVR32-3-2	380V/50HZ	5.5	7.5	50	32	\$2,365
LVR32-3	380V/50HZ	5.5	7.5	55.5	32	\$2,365
LVR32-4-2	380V/50HZ	7.5	10	68.5	32	\$2,591
LVR32-4	380V/50HZ	7.5	10	74.5	32	\$2,589
LVR32-5-2	380V/50HZ	11	15	88.5	32	\$3,369
LVR32-5	380V/50HZ	11	15	94.5	32	\$3,369
LVR32-6-2	380V/50HZ	11	15	107	32	\$3,526
LVR32-6	380V/50HZ	11	15	113	32	\$3,524
LVR32-7-2	380V/50HZ	15	20	127	32	\$3,896
LVR32-7	380V/50HZ	15	20	133	32	\$3,898
LVR32-8-2	380V/50HZ	15	20	145	32	\$4,120
LVR32-8	380V/50HZ	15	20	151	32	\$4,120
LVR32-9-2	380V/50HZ	18.5	24	165	32	\$4,648
LVR32-9	380V/50HZ	18.5	24	171	32	\$4,649
LVR32-10-2	380V/50HZ	18.5	24	184	32	\$4,827
LVR32-10	380V/50HZ	18.5	24	190	32	\$4,827
LVR32-11-2	380V/50HZ	22	30	203	32	\$5,567
LVR32-11	380V/50HZ	22	30	209	32	\$5,563
LVR32-12-2	380V/50HZ	22	30	222	32	\$5,723
LVR32-12	380V/50HZ	22	30	227	32	\$5,725
LVR32-13-2	380V/50HZ	30	40	244	32	\$6,889
LVR32-13	380V/50HZ	30	40	250	32	\$6,894
LVR32-14-2	380V/50HZ	30	40	263	32	\$7,068
LVR32-14	380V/50HZ	30	40	269	32	\$7,068



LVR

Paslanmaz Fanlı
Döküm Taban ve
Pompa Kapağı

LVS45-1-1	380V/50HZ	3	4	20	45	\$2,651
LVS45-1	380V/50HZ	4	5.5	24	45	\$2,683
LVS45-2-2	380V/50HZ	5.5	7.5	41	45	\$3,224

DİK MİLLİ PASLANMAZ FANLI KADEMELİ POMPA



LVS

Su ile Temas Eden
Tüm Parçalar
Paslanmaz

Modeli	Volt / Frekans	Güç		Max.basma yüksekliği	Nominal.Debi m³/h	Fiyat
		(Kw)	Hp			
LVS45-2	380V/50HZ	7.5	10	48.5	45	\$3,290
LVS45-3-2	380V/50HZ	11	15	66	45	\$4,163
LVS45-3	380V/50HZ	11	15	73.5	45	\$4,163
LVS45-4-2	380V/50HZ	15	20	91	45	\$4,551
LVS45-4	380V/50HZ	15	20	98.5	45	\$4,551
LVS45-5-2	380V/50HZ	18.5	24	116	45	\$5,095
LVS45-5	380V/50HZ	18.5	24	124	45	\$5,095
LVS45-6-2	380V/50HZ	22	30	142	45	\$5,852
LVS45-6	380V/50HZ	22	30	149	45	\$5,850
LVS45-7-2	380V/50HZ	30	40	168	45	\$7,029
LVS45-7	380V/50HZ	30	40	176	45	\$7,030
LVS45-8-2	380V/50HZ	30	40	193	45	\$7,320
LVS45-8	380V/50HZ	30	40	200	45	\$7,318
LVS45-9-2	380V/50HZ	30	40	217	45	\$7,514
LVS45-9	380V/50HZ	37	50	226	45	\$7,627
LVS45-10-2	380V/50HZ	37	50	243	45	\$7,802
LVS45-10	380V/50HZ	37	50	251	45	\$7,805
LVS45-11-2	380V/50HZ	45	60	273	45	\$8,911
LVS45-11	380V/50HZ	45	60	281	45	\$8,912
LVS45-12-2	380V/50HZ	45	60	298	45	\$9,089
LVS45-12	380V/50HZ	45	60	306	45	\$9,093
LVS45-13-2	380V/50HZ	45	60	313	45	\$9,289



LVR

Paslanmaz Fanlı
Döküm Taban ve
Pompa Kapağı

LVR45-1-1	380V/50HZ	3	4	20	45	\$1,725
LVR45-1	380V/50HZ	4	5.5	24	45	\$1,755
LVR45-2-2	380V/50HZ	5.5	7.5	41	45	\$2,302
LVR45-2	380V/50HZ	7.5	10	48.5	45	\$2,363
LVR45-3-2	380V/50HZ	11	15	66	45	\$3,239
LVR45-3	380V/50HZ	11	15	73.5	45	\$3,240
LVR45-4-2	380V/50HZ	15	20	91	45	\$3,630
LVR45-4	380V/50HZ	15	20	98.5	45	\$3,629
LVR45-5-2	380V/50HZ	18.5	24	116	45	\$4,173
LVR45-5	380V/50HZ	18.5	24	124	45	\$4,174
LVR45-6-2	380V/50HZ	22	30	142	45	\$4,929
LVR45-6	380V/50HZ	22	30	149	45	\$4,929
LVR45-7-2	380V/50HZ	30	40	168	45	\$6,111
LVR45-7	380V/50HZ	30	40	176	45	\$6,111
LVR45-8-2	380V/50HZ	30	40	193	45	\$6,380
LVR45-8	380V/50HZ	30	40	200	45	\$6,383
LVR45-9-2	380V/50HZ	30	40	217	45	\$6,601
LVR45-9	380V/50HZ	37	50	226	45	\$6,716
LVR45-10-2	380V/50HZ	37	50	243	45	\$6,864
LVR45-10	380V/50HZ	37	50	251	45	\$6,865
LVR45-11-2	380V/50HZ	45	60	273	45	\$7,987
LVR45-11	380V/50HZ	45	60	281	45	\$7,987
LVR45-12-2	380V/50HZ	45	60	298	45	\$8,154
LVR45-12	380V/50HZ	45	60	306	45	\$8,154
LVR45-13-2	380V/50HZ	45	60	313	45	\$8,354

LVS64-1-1	380V/50HZ	4	5.5	20	64	\$2,776
LVS64-1	380V/50HZ	5.5	7.5	27	64	\$3,133
LVS64-2-2	380V/50HZ	7.5	10	40	64	\$3,384

DİK MİLLİ PASLANMAZ FANLI KADEMELİ POMPA



LVS

Su ile Temas Eden
Tüm Parçalar
Paslanmaz

Modeli	Volt / Frekans	Güç		Max.basma yüksekliği	Nominal.Debi m³/h	Fiyat
		(Kw)	Hp			
LVS64-2-1	380V/50HZ	11	15	48	64	\$3,991
LVS64-2	380V/50HZ	11	15	55	64	\$3,990
LVS64-3-2	380V/50HZ	15	20	68	64	\$4,469
LVS64-3-1	380V/50HZ	15	20	75.5	64	\$4,469
LVS64-3	380V/50HZ	18.5	24	83.5	64	\$4,831
LVS64-4-2	380V/50HZ	18.5	24	96	64	\$5,018
LVS64-4-1	380V/50HZ	22	30	104	64	\$5,596
LVS64-4	380V/50HZ	22	30	112	64	\$5,597
LVS64-5-2	380V/50HZ	30	40	126	64	\$6,788
LVS64-5-1	380V/50HZ	30	40	134	64	\$6,786
LVS64-5	380V/50HZ	30	40	141	64	\$6,786
LVS64-6-2	380V/50HZ	30	40	154	64	\$6,994
LVS64-6-1	380V/50HZ	37	50	162	64	\$7,105
LVS64-6	380V/50HZ	37	50	170	64	\$7,105
LVS64-7-2	380V/50HZ	37	50	182	64	\$7,296
LVS64-7-1	380V/50HZ	37	50	190	64	\$7,296
LVS64-7	380V/50HZ	45	60	202	64	\$8,229
LVS64-8-2	380V/50HZ	45	60	214	64	\$8,520
LVS64-8-1	380V/50HZ	45	60	222	64	\$8,520



LVR

Paslanmaz Fanlı
Döküm Taban ve
Pompa Kapağı

LVR64-1-1	380V/50HZ	4	5.5	20	64	\$1,777
LVR64-1	380V/50HZ	5.5	7.5	27	64	\$2,136
LVR64-2-2	380V/50HZ	7.5	10	40	64	\$2,387
LVR64-2-1	380V/50HZ	11	15	48	64	\$2,993
LVR64-2	380V/50HZ	11	15	55	64	\$2,994
LVR64-3-2	380V/50HZ	15	20	68	64	\$3,473
LVR64-3-1	380V/50HZ	15	20	75.5	64	\$3,473
LVR64-3	380V/50HZ	18.5	24	83.5	64	\$3,833
LVR64-4-2	380V/50HZ	18.5	24	96	64	\$4,023
LVR64-4-1	380V/50HZ	22	30	104	64	\$4,601
LVR64-4	380V/50HZ	22	30	112	64	\$4,601
LVR64-5-2	380V/50HZ	30	40	126	64	\$5,790
LVR64-5-1	380V/50HZ	30	40	134	64	\$5,790
LVR64-5	380V/50HZ	30	40	141	64	\$5,790
LVR64-6-2	380V/50HZ	30	40	154	64	\$5,996
LVR64-6-1	380V/50HZ	37	50	162	64	\$6,110
LVR64-6	380V/50HZ	37	50	170	64	\$6,110
LVR64-7-2	380V/50HZ	37	50	182	64	\$6,299
LVR64-7-1	380V/50HZ	37	50	190	64	\$6,301
LVR64-7	380V/50HZ	45	60	202	64	\$7,232
LVR64-8-2	380V/50HZ	45	60	214	64	\$7,522
LVR64-8-1	380V/50HZ	45	60	222	64	\$7,523

LVS90-1-1	380V/50HZ	5.5	7.5	21	90	\$3,271
LVS90-1	380V/50HZ	7.5	10	26	90	\$3,339

DİK MİLLİ PASLANMAZ FANLI KADEMELİ POMPA



LVS

Su ile Temas Eden
Tüm Parçalar
Paslanmaz

Modeli	Volt /	Güç		Max.basma yüksekliği	Nominal.Debi m³/h	Fiyat
		(Kw)	Hp			
LVS90-2-2	380V/50HZ	11	15	43	90	\$4,111
LVS90-2	380V/50HZ	15	20	55	90	\$4,325
LVS90-3-2	380V/50HZ	18.5	24	71.5	90	\$4,972
LVS90-3	380V/50HZ	22	30	84.5	90	\$5,542
LVS90-4-2	380V/50HZ	30	40	102	90	\$6,763
LVS90-4	380V/50HZ	30	40	114	90	\$6,764
LVS90-5-2	380V/50HZ	37	50	131	90	\$7,072
LVS90-5	380V/50HZ	37	50	144	90	\$7,073
LVS90-6-2	380V/50HZ	45	60	161	90	\$8,200
LVS90-6	380V/50HZ	45	60	175	90	\$8,203



LVR

Paslanmaz Fanlı
Döküm Taban ve
Pompa Kapağı

Modeli	Volt / Frekans	Güç		Max.basma yüksekliği	Nominal.Debi m³/h	Fiyat
		(Kw)	Hp			
LVR90-1-1	380V/50HZ	5.5	7.5	21	90	\$2,243
LVR90-1	380V/50HZ	7.5	10	26	90	\$2,314
LVR90-2-2	380V/50HZ	11	15	43	90	\$3,383
LVR90-2	380V/50HZ	15	20	55	90	\$3,297
LVR90-3-2	380V/50HZ	18.5	24	71.5	90	\$3,944
LVR90-3	380V/50HZ	22	30	84.5	90	\$4,515
LVR90-4-2	380V/50HZ	30	40	102	90	\$5,735
LVR90-4	380V/50HZ	30	40	114	90	\$5,735
LVR90-5-2	380V/50HZ	37	50	131	90	\$6,044
LVR90-5	380V/50HZ	37	50	144	90	\$6,044
LVR90-6-2	380V/50HZ	45	60	161	90	\$7,170
LVR90-6	380V/50HZ	45	60	175	90	\$7,170



Model	Power Range	Volt	Price
SM-A1-2200	0-2.2KW	220V/50Hz	\$89
MB-B1-4000	0-4KW	380V/50Hz	\$131
MB-B1-7500	4-7.5KW	380V/50Hz	\$143
MB-B1-15000	4-15KW	380V/50Hz	\$184



Model	Power Range	Type	Volt	Price
HM222	0.37-2.2KW	Double	220V/50Hz	\$310
HT204	0.75-4KW	Double	380V/50Hz	\$292
HT211	5.5-11KW	Double	380V/50Hz	\$327
HM122	0.37-2.2KW	Single	220V/50Hz	\$236
HT104	0.75-4KW	Single	380V/50Hz	\$230
HT111	5.5-11KW	Single	380V/50Hz	\$246
HT115	5.5-15KW	Single	380V/50Hz	\$292



Model	Power	Volt	Price
8200B-4T004PH-DW	5.5HP	380V	\$748
8200B-4T2R2PH-DW	4HP	380V	\$577
8200B-4T5R5PH-DW	7.5HP	380V	\$855
8200B-4T7R5PH-DW	10HP	380V	\$941



Model	Size	Pressure Range	Price
PS-02C	1/4"	1.4-5.6bar	\$8.60



Model	Size	Pressure Range	Price
PG-SS40A	40mm	0-6bar	\$4.28
PG-S50A	50mm	0-10bar	\$4.81
PG-P60A	60mm	0-16bar	\$5.10
PG-P60A	60mm	0-20bar	\$5.10
PG-P50R	50mm	0-10bar	\$4.53
PG-P60R	60mm	0-10bar	\$5.10



Model	Cable Length	Life time	Price
FLO-01	0.5m	5000 cycles	\$3.00
FLO-01B 1.6M	1.6m	5000 cycles	\$10.00
FLO-01B 3M	3m	5000 cycles	\$12.00
FLO-01B 5M	5m	5000 cycles	\$15.00
FLO-01B 10M	10m	5000 cycles	\$25.00



PAKET HİDROFOR SİSTEMLERİ



HİDROMATLI PERİFERİK HİDROFOR

Model	Kolay Seçim	Nominal Güç		Bağlantı Çapı		Şebeke Bağlantısı	Birim Fiyatı (USD)
		Kw	Hp	Giriş	Çıkış		
F-APm 37	3 kat 3 daire	0.37	0.5	1'	1'	230 V	132
F-APm 75	6 kat 6 daire	0.75	1	1'	1'	230 V	183



HİDROMATLI DÖKÜM GÖVDELİ JET HİDROFOR

Model	Kolay Seçim	Nominal Güç		Bağlantı Çapı		Şebeke Bağlantısı	Birim Fiyatı (USD)
		Kw	Hp	Giriş	Çıkış		
F-AJm 75	4 kat 9 daire	0.75	1	1'	1'	230 V	227
F-AJm 90	4 kat 12 daire	1	1.2	1'	1'	230 V	237
F-AJm 110	4 kat 9 daire	1.1	1.5	1'	1'	230 V	340
F-AJm 150	7 kat 12 daire	1.5	2	1'	1'	230 V	363



HİDROMATLI PASLANMAZ JET HİDROFOR

Model	Kolay Seçim	Nominal Güç		Bağlantı Çapı		Şebeke Bağlantısı	Birim Fiyatı (USD)
		Kw	Hp	Giriş	Çıkış		
F-4XCm	5 kat 10 daire	0.75	1	1'	1'	230 V	341
F-5XCm	7 kat 10 daire	0.9	1.2	1'	1'	230 V	378



YATAY TANKLI MİNİ HİDROFOR

Model	Kolay Seçim	Nominal Güç		Bağlantı Çapı		Şebeke Bağlantısı	Birim Fiyatı (USD)
		Kw	Hp	Giriş	Çıkış		
LKJ 901 SA	3 kat 5 daire	0.9	1.2	1'	1'	230 V	227
LKJ 1301	4 kat 10 daire	1.3	1.75	1'	1'	230 V	236



YATAY TANKLI DÖKÜM GÖVDELİ JET HİDROFOR

Model	Kolay Seçim	Nominal Güç		Bağlantı Çapı		Şebeke Bağlantısı	Birim Fiyatı (USD)
		Kw	Hp	Giriş	Çıkış		
AJM 110-24L	4 kat 9 daire	1.1	1.5	1'	1'	230 V	327
AJM 150-24L	4 kat 17 daire	1.5	2	1'	1'	230 V	360
AJM 110-50L	4 kat 9 daire	1.1	1.5	1'	1'	230 V	357
AJM 150-50L	4 kat 17 daire	1.5	2	1'	1'	230 V	365



YATAY TANKLI PASLANMAZ JET HİDROFOR

Model	Kolay Seçim	Nominal Güç		Bağlantı Çapı		Şebeke Bağlantısı	Birim Fiyatı (USD)
		Kw	Hp	Giriş	Çıkış		
3XCm120-24L	3 kat 10 daire	0.6	0.8	1'	1'	230 V	318
4XCm-120-24L	5 kat 10 daire	0.75	1	1'	1'	230 V	342
5XCm120--24L	7 kat 10 daire	0.9	1.2	1'	1'	230 V	379
4XCm120--50L	5 kat 10 daire	0.75	1	1'	1'	230 V	361
5XCm120-50L	7 kat 10 daire	0.9	1.2	1'	1'	230 V	398

PAKET HİDROFOR SİSTEMLERİ



YATAY TANKLI ÇOK KADEMELİ HİDROFOR

Model	Kolay Seçim	Nominal Güç		Bağlantı Çapı		Şebeke Bağlantısı	Birim Fiyatı (USD)
		Kw	Hp	Giriş	Çıkış		
5XCm100S-100L	8 kat 13 daire	0.9	1.2	1'	1'	230 V	409
6XCm100S-100L	9 kat 29 daire	2.2	3	1'	1'	230 V	451

- Denge tankı fiyata dahil değildir. Denge tankı bağlantısının PPRC boru ile yapılması tavsiye edilir.

YATAY ÇOK KADEMELİ İKİ POMPALI HİDROFOR

Model	Kolay Seçim	Nominal Güç		Bağlantı Çapı		Şebeke Bağlantısı	Birim Fiyatı (USD)
		Kw	Hp	Giriş	Çıkış		
2-6XCm 100S	9 kat 29 daire	2x2.2	2x3	1'	1'	230 V	1.152
2-7XCm 100S	14 kat 29 daire	2x3	2x4	1'	1'	380 V	1.287

- Denge tankı fiyata dahil değildir. Denge tankı bağlantısının PPRC boru ile yapılması tavsiye edilir.

YATAY MİLLİ MONOBLOK HİDROFOR

Model	Çalışma Aralığı		Nominal Güç		Bağlantı Çapı		Şebeke Bağlantısı	Birim Fiyatı (USD)
	m³/h	Mss	Kw	Hp	Giriş	Çıkış		
Tek Pompalı Sistem								
1-2ACm75	3	35	0.75	1	1'	1'	230 V	611
1-2ACm110	4	35	1.1	1.5	1 1/4'	1 1/4'	230 V	733
1-2AC150	5	50	1.5	2	1 1/4'	1'	380 V	783
1-2AC220	6	50	2.2	3	1 1/2'	1 1/4'	380 V	820
1-2AC300	7	55	3	4	1 1/2'	1 1/4'	380 V	1.100
1-2AC400	8	70	4	5.5	1 1/2'	1 1/4'	380 V	1.162
İki Pompalı Sistem								
2-2ACm75	2x3	35	2x0.75	2x1	1'	1'	230 V	816
2-2ACm110	2x4	35	2x1.1	2x1.5	1 1/4'	1 1/4'	230 V	1.044
2-2AC150	2x5	50	2x1.5	2x2	1 1/4'	1'	380 V	1.156
2-2AC220	2x6	50	2x2.2	2x3	1 1/2'	1 1/4'	380 V	1.204
2-2AC300	2x7	55	2x3	2x4	1 1/2'	1 1/4'	380 V	1.716
2-2AC400	2x8	70	2x4	2x5.5	1 1/2'	1 1/4'	380 V	1.800

- Denge tankı fiyata dahil değildir. Denge tankı bağlantısının PPRC boru ile yapılması tavsiye edilir.

GENLEŞME TANKLARI

Model	Hacim	Özellik	10 Bar Fiyat (USD)	16 Bar Fiyat (USD)
CRW 100 DÇM	100	Dik Ayaklı Tip Manometreli	76,00	109,10
CRW 150 D	150		111,00	161,60
CRW 200 D	200		136,00	235,40
CRW 300 D	300		172,00	282,50
CRW 500 D	500		260,00	395,90
CRW 750 D	750		348,00	571,40
CRW 1000 D	1000		454,00	674,10



TEK VE ÇOK POMPALI HİDROFOR SİSTEMLERİ



TEK POMPALI KADEMELİ NORİL FANLI DIKEY MİLLİ HİDROFOR

7 TON SERİSİ

Model	Nominal Güç		H	Debi (Q) m³/h			Denge Tankı		Fiyat (USD)
	Kw	Hp		1x4	1x6	1x8	Hacim	Basınç	
1-EVP6H-6	2.2	3	Çalıştırma Basıncı (mSS)	70	65	60	100 lt	PN10	990
1-EVP8-07	2.2	3		81	75	73	100 lt	PN10	1.100
1-EVP8-08	2.2	3		92	85	83	100 lt	PN10	1210
1-EVP6H-8	3	4		103	95	93	100 lt	PN16	1.275
1-EVP6H-10	4	5.5		114	105	103	100 lt	PN16	1.350



İKİ POMPALI KADEMELİ NORİL FANLI DIKEY MİLLİ HİDROFOR

Model	Nominal Güç		H	Debi (Q) m³/h			Denge Tankı		Fiyat (USD)
	Kw	Hp		2x4	2x6	2x8	Hacim	Basınç	
2-EVP6H-6	2x2.2	2x3	Çalıştırma Basıncı (mSS)	70	65	60	100 lt	PN10	1.725
2-EVP8-07	2x2.2	2x3		81	75	73	100 lt	PN10	1.900
2-EVP8-08	2x2.2	2x3		92	85	83	100 lt	PN10	2.090
2-EVP6H-8	2x3	2x4		103	95	93	100 lt	PN16	2.215
2-EVP6H-10	2x4	2x5.5		114	105	103	100 lt	PN16	2.475

- Denge tankı fiyata dahil değildir. Denge tankı bağlantısının PPRC boru ile yapılması tavsiye edilir.



TEK POMPALI KADEMELİ NORİL FANLI DIKEY MİLLİ HİDROFOR

10 TON SERİSİ

Model	Nominal Güç		H	Debi (Q) m³/h			Denge Tankı		Fiyat
	Kw	Hp		1x8	1x10	1x12	Hacim	Basınç	
1-EVP10H-4	4	5.5	Çalıştırma Basıncı (mSS)	64	49	30	200 lt	PN10	1.300
1-EVP10H-5	5.5	7.5		74	57	35	200 lt	PN10	1.500
1-EVP10H-6	5.5	7.5		83	64	39	300 lt	PN16	1.550
1-EVP10-12	5.5	7.5		110	85	51	300 lt	PN16	1.705
1-EVP10-13	5.5	7.5		119	92	55	300 lt	PN16	1.875
1-EVP10H-8	7.5	10		153	122	81	300 lt	PN25	1.761

- Denge tankı fiyata dahil değildir. Denge tankı bağlantısının PPRC boru ile yapılması tavsiye edilir.



İKİ POMPALI KADEMELİ NORİL FANLI DIKEY MİLLİ HİDROFOR

Model	Nominal Güç		H	Debi (Q) m³/h			Denge Tankı		Fiyat
	Kw	Hp		2x8	2x10	2x12	Hacim	Basınç	
2-EVP10H-4	2x4	2x5.5	Çalıştırma Basıncı (mSS)	64	49	30	200 lt	PN10	1.670
2-EVP10H-5	2x5.5	2x7.5		74	57	35	200 lt	PN10	2.800
2-EVP10H-6	2x5.5	2x7.5		83	64	39	300 lt	PN16	2856
2-EVP10-12	2x5.5	2x7.5		110	85	51	300 lt	PN16	3.145
2-EVP10-13	2x5.5	2x7.5		119	92	55	300 lt	PN16	3.460
2-EVP10H-8	2x7.5	2x10		153	122	81	300 lt	PN25	3.100

- Denge tankı fiyata dahil değildir. Denge tankı bağlantısının PPRC boru ile yapılması tavsiye edilir.

- 3 POMPA VE DAHA ÜZERİ KAPASİTELİ HİDROFORLARIMIZ İÇİN FİYAT İSTEYİNİZ.
 - FREKANS KONVERTÖRLÜ HİDROFORLARIMIZ İÇİN FİYAT İSTEYİNİZ.

TEK VE ÇOK POMPALI HİDROFOR SİSTEMLERİ

TEK POMPALI KADEMELİ PASLANMAZ FANLI DİKEY MİLLİ HİDROFOR

15 TON SERİSİ


Model	Nominal Güç		H	Debi (Q) m³/h			Denge Tankı		Fiyat (USD)
	Kw	Hp		1x12	1x15	1x18	Hacim	Basınç	
1-LVR15-4	4	5.5	Çalıştırma Basıncı (mSS)	51	42	30	200 lt	PN10	2.182
1-LVR15-5	4	5.5		64	53	37	200 lt	PN10	2.245
1-LVR15-6	5.5	7.5		77	64	45	300 lt	PN10	2.770
1-LVR15-7	5.5	7.5		90	79	56	300 lt	PN16	2.900
1-LVR15-9	7.5	10		107	90	67	300 lt	PN16	3.100
1-LVR15-10	11	15		120	102	73	300 lt	PN16	4.127
1-LVR15-12	11	15		161	137	95	500 lt	PN25	4.320

- Denge tankı fiyata dahil değildir. Denge tankı bağlantısının PPRC boru ile yapılması tavsiye edilir.

İKİ POMPALI KADEMELİ PASLANMAZ FANLI DİKEY MİLLİ HİDROFOR



Model	Nominal Güç		H	Debi (Q) m³/h			Denge Tankı		Fiyat (USD)
	Kw	Hp		2x12	2x15	2x18	Hacim	Basınç	
2-LVR15-4	2x4	2x5.5	Çalıştırma Basıncı (mSS)	51	42	30	200 lt	PN10	4.270
2-LVR15-5	2x4	2x5.5		64	53	37	200 lt	PN10	4.400
2-LVR15-6	2x5.5	2x7.5		77	64	45	300 lt	PN10	5.520
2-LVR15-7	2x5.5	2x7.5		90	79	56	300 lt	PN16	5.800
2-LVR15-9	2x7.5	2x10		107	90	67	300 lt	PN16	6.244
2-LVR15-10	2x11	2x15		120	102	73	300 lt	PN16	8.453
2-LVR15-12	2x11	2x15		161	137	95	500 lt	PN25	8.450

- Denge tankı fiyata dahil değildir. Denge tankı bağlantısının PPRC boru ile yapılması tavsiye edilir.

- 3 POMPA VE DAHA ÜZERİ KAPASİTELİ HİDROFORLARIMIZ İÇİN FİYAT İSTEYİNİZ.

- FREKANS KONVERTÖRLÜ HİDROFORLARIMIZ İÇİN FİYAT İSTEYİNİZ.

GENLEŞME TANKLARI



Model	Hacim	Özellik	10 Bar Fiyat (USD)	16 Bar Fiyat (USD)
CRW 100 DÇM	100	Dik Ayaklı Tip Manometreli	76,00	109,10
CRW 150 D	150		111,00	161,60
CRW 200 D	200		136,00	235,40
CRW 300 D	300		172,00	282,50
CRW 500 D	500		260,00	395,90
CRW 750 D	750		348,00	571,40
CRW 1000 D	1000		454,00	674,10

YANGINLA MÜCADELE SİSTEMLERİ

İKİ POMPALI KADEMELİ NORİL FANLI DİKEY MİLLİ HİDROFOR

10 TON SERİSİ

Model	Nominal Güç		H	Debi (Q) m³/h			Denge Tankı		Fiyat (USD)
	Kw	Hp		2x8	2x10	2x12	Hacim	Basınç	
2-EVP10H-4	2x4	2x5.5	Çalıştırma Basıncı (mSS)	64	49	30	200 lt	PN10	2.052
2-EVP10H-5	2x5.5	2x7.5		74	57	35	200 lt	PN10	2538
2-EVP10H-6	2x5.5	2x7.5		83	64	39	300 lt	PN16	2.595
2-EVP10-12	2x5.5	2x7.5		110	85	51	300 lt	PN16	2.855
2-EVP10-13	2x5.5	2x7.5		119	92	55	300 lt	PN16	3.140
2-EVP10H-8	2x7.5	2x10		153	122	81	300 lt	PN25	2.844

- Denge tankı fiyata dahil değildir. Denge tankı bağlantısının PPRC boru ile yapılması tavsiye edilir.

İKİ POMPALI KADEMELİ PASLANMAZ FANLI DİKEY MİLLİ HİDROFOR

15 TON SERİSİ

Model	Nominal Güç		H	Debi (Q) m³/h			Denge Tankı		Fiyat (USD)
	Kw	Hp		2x12	2x15	2x18	Hacim	Basınç	
2-LVR15-4	2x4	2x5.5	Çalıştırma Basıncı (mSS)	51	42	30	200 lt	PN10	4.107
2-LVR15-5	2x4	2x5.5		64	53	37	200 lt	PN10	4.248
2-LVR15-6	2x5.5	2x7.5		77	64	45	300 lt	PN10	5.448
2-LVR15-7	2x5.5	2x7.5		90	79	56	300 lt	PN16	5.748
2-LVR15-9	2x7.5	2x10		107	90	67	300 lt	PN16	6.225
2-LVR15-10	2x11	2x15		120	102	73	300 lt	PN16	8.592
2-LVR15-12	2x11	2x15	161	137	95	500 lt	PN25	9.036	

- Denge tankı fiyata dahil değildir. Denge tankı bağlantısının PPRC boru ile yapılması tavsiye edilir.

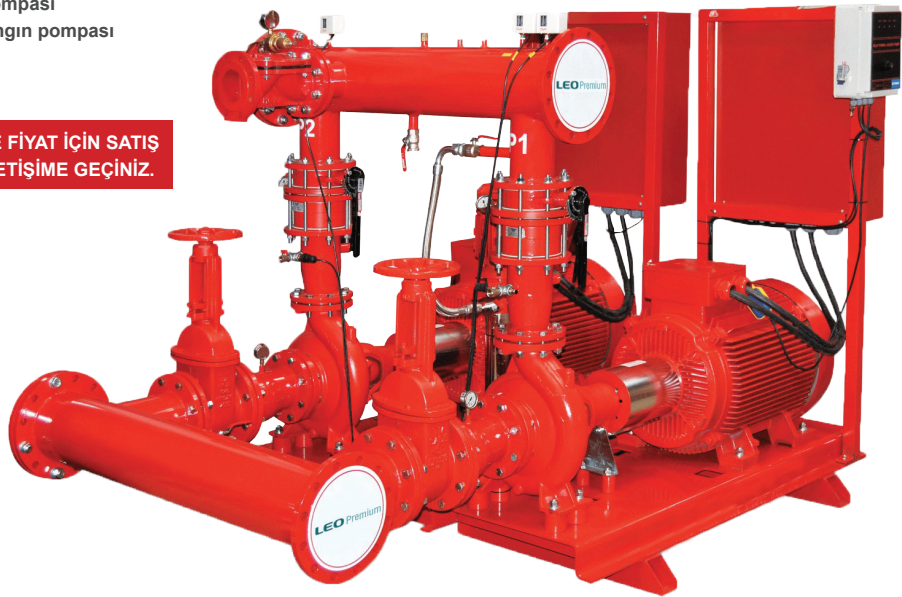
TS EN 12845 STANDARDINA UYGUN YANGINLA MÜCADELE SİSTEMLERİ

- Elektrik tahrikli yangın pompası
- Elektrik / Dizel tahrikli yangın pompası

NFPA 20 STANDARDINA UYGUN YANGINLA MÜCADELE SİSTEMLERİ

- Elektrik tahrikli yangın pompası
- Elektrik / Dizel tahrikli yangın pompası

DOĞRU ÜRÜN SEÇİMİ VE FİYAT İÇİN SATIŞ MÜHENDİSLERİMİZLE İLETİŞİME GEÇİNİZ.



4" NORİL FANLI DERİN KUYU POMPASI

Model	Hp	m ³ /h	Kapasite Debi (Q) m ³ /h												Çıkış inch	Boy mm	Kg	Fiyat (USD)
			0.0	1.8	2.1	2.4	2.7	3.0	3.3	3.6	4.2	4.8	5.4	6.0				
4XR-4/04	0.5	Basma Yüksekliği (mSS)	26	23	23	22	22	21	20	19	18	15	12	8	1 1/4"	275	2.6	125
4XR-4/07	0.75		44	40	39	38	36	35	33	32	28	23	17	11		345	3.2	129
4XR-4/10	1		65	59	58	56	54	52	50	47	42	35	27	18		410	3.8	183
4XR-4/14	1.5		92	84	82	80	77	75	71	69	61	51	39	25		495	4.6	183
4XR-4/18	2		119	109	107	104	100	97	93	90	79	66	51	33		585	5.4	214
4XR-4/20	2		132	121	119	116	111	108	103	100	88	73	57	37		650	6	240
4XR-4/27	3		179	164	160	154	151	145	140	133	115	99	78	54		780	6.5	310
4XR-4/32	4		211	197	192	186	181	173	167	159	141	118	93	66		950	8.4	369
4XR-4/40	5		268	246	239	232	225	215	206	195	168	138	103	71		1.125	9.5	389
4XR-4/44	5.5		292	272	265	256	247	238	226	214	184	150	120	85		1.215	10.7	428

Model	Hp	m ³ /h	Kapasite Debi (Q) m ³ /h											Çıkış inch	Boy mm	Kg	Fiyat (USD)	
			0.0	2.7	3.0	3.3	3.6	4.2	4.8	5.4	6.0	7.2	8.0					9.0
4XR-6/06	1	Basma Yüksekliği (mSS)	35	33	33	32	32	31	30	29	27	23	19	13	2"	370	2.9	147
4XR-6/09	1.5		52	48	48	47	47	45	43	41	38	32	26	18		460	3.6	177
4XR-6/13	2		78	74	73	73	72	71	68	65	62	53	45	31		610	4.8	214
4XR-6/19	3		109	103	102	102	100	98	94	89	83	70	60	41		820	6.6	280
4XR-6/26	4		151	142	141	139	138	133	125	118	108	89	74	48		1.030	7.9	347
4XR-6/31	5		185	173	172	170	167	160	152	141	130	109	90	56		1.220	9.3	400
4XR-6/34	5.5		201	188	187	185	183	176	165	154	139	116	95	64		1.305	9.9	424
4XR-6/45	7.5		268	253	252	249	247	237	225	212	192	154	129	99		1.635	12.8	518

Model	Hp	m ³ /h	Kapasite Debi (Q) m ³ /h											Çıkış inch	Boy mm	Kg	Fiyat (USD)	
			0.0	3.6	4.2	4.8	5.4	6.0	7.0	8.0	9.0	9.6	10.8					12.0
4XR-8/04	1	Basma Yüksekliği (mSS)	25	24	24	23	23	22	20	18	15	14	10	8	2"	310	2.6	140
4XR-8/06	1.5		38	36	36	35	34	33	31	27	24	21	15	10		370	2.9	162
4XR-8/09	2		57	54	53	52	51	49	45	41	35	31	24	15		460	3.6	218
4XR-8/14	3		88	84	83	81	79	75	70	63	53	47	36	22		640	4.9	218
4XR-8/18	4		113	108	106	104	101	98	90	81	69	63	47	32		765	6	253
4XR-8/21	5		134	130	128	126	122	117	109	99	88	80	60	39		885	6.9	300
4XR-8/23	5.5		146	142	139	137	132	125	116	105	92	83	63	41		945	7	320
4XR-8/32	7.5		201	197	194	189	181	173	158	142	129	116	91	59		1.245	9.2	411
4XR-8/42	10		266	259	254	247	239	229	210	186	164	157	119	82		1.572	11.6	535

Model	Hp	m ³ /h	Kapasite Debi (Q) m ³ /h											Çıkış inch	Boy mm	Kg	Fiyat (USD)	
			0.0	9.0	11	13	14	15	16	17	19	21	23					24
4XR-12/05	1.5	Basma Yüksekliği (mSS)	30	27	26	25	24	22	18	16	13	12	9	5	2"	445	3.5	176
4XR-12/07	2		42	38	37	35	33	31	27	23	20	17	12	7		545	4.1	202
4XR-12/11	3		64	58	57	53	51	47	40	34	30	25	18	11		775	5.9	253
4XR-12/14	4		82	74	73	69	66	61	53	46	39	34	25	15		925	7	324
4XR-12/18	5.5		107	99	97	93	89	83	72	63	56	49	39	26		1.155	8.6	402
4XR-12/25	7.5		150	138	134	128	123	117	103	89	80	70	55	38		1.540	11.4	513
4XR-12/32	10		194	179	175	167	160	152	133	118	105	92	75	53		1.920	14.5	630

Model	Hp	m ³ /h	Kapasite Debi (Q) m ³ /h											Çıkış inch	Boy mm	Kg	Fiyat (USD)	
			0.0	9.0	11	13	14	15	16	17	19	21	23					24
4XR-15/06	2	Basma Yüksekliği (mSS)	35	26	23	21	20	19	17	16	14	11	8	5	2"	539	4.4	212
4XR-15/08	3		46	34	31	28	26	25	23	22	18	14	10	7		686	5.4	256
4XR-15/11	4		63	48	43	39	37	35	33	30	26	21	15	11		907	6.9	324
4XR-15/15	5.5		87	72	61	55	52	49	47	45	39	31	21	15		1.202	9	400
4XR-15/20	7.5		121	98	86	76	71	67	62	58	50	40	27	18		1.570	11.6	500
4XR-15/28	10		165	130	112	98	92	86	80	74	62	49	34	25		2.159	15.8	650

GENLEŞME TANKLARI



Model	Hacim	Özellik	10 Bar Fiyat (USD)	16 Bar Fiyat (USD)
CRW 2 S	2	Silindirik Tip	11,00	-
CRW 5 S	5		15,00	-
CRW 8 S	8		19,40	-
CRW 12 S	12		19,80	-
CRW 18 S	18		21,00	-
CRW 24 S	24		21,40	31,00
CRW 35 S	35		33,00	-
CRW 50 S	50		35,00	50,30
CRW 24 İ	24	İtalyan Tip	19,80	-
CRW 24 D	24	Dik Ayaklı Tip	24,00	-
CRW 50 D	50		37,00	53,90
CRW 60 D	60		48,00	-
CRW 80 D	80		69,00	-
CRW 100 D	100		72,00	-
CRW 100 DÇM	100		76,00	109,10
CRW 150 D	150		111,00	161,60
CRW 200 D	200		136,00	235,40
CRW 300 D	300	Dik Ayaklı Tip Manometreli	172,00	282,50
CRW 500 D	500		260,00	395,90
CRW 750 D	750		348,00	571,40
CRW 1000 D	1000		454,00	674,10
CRW 1500 D	1500		788,00	1.156,00
CRW 2000 D	2000		1.132,00	1.896,00
CRW 2500 D	2500		1.304,00	2.012,00
CRW 3000 D	3000		1.986,00	2.684,00
CRW 4000 D	4000	Yatık Ayaklı Tip	3.240,00	4.062,00
CRW 5000 D	5000		4.380,00	5.459,00
CRW 24 Y	24		24,00	-
CRW 50 Y	50		37,00	53,90
CRW 60 Y	60		48,00	-
CRW 80 Y	80		69,00	-
CRW 100 Y	100		72,00	-



NOR
TEKNOLOJİK TESİSAT SİSTEMLERİ VE REKLAMCILIK